

Standard and Drawerline Base Hob & Sink Cabinets

MAI00007 R1



INSTALLATION GUIDE

Warning: Please read these instructions carefully before proceeding.

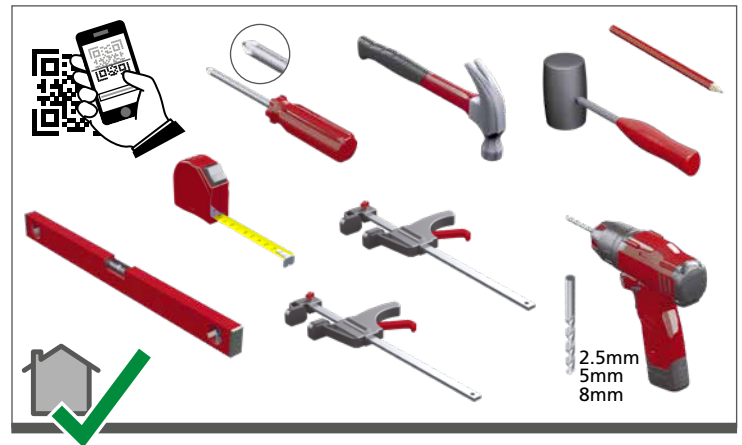
This instruction is used in conjunction with the Installation Guide.

Important: Installation shall be carried out exactly according to the manufacturer's instructions otherwise a safety risk can occur if incorrectly installed.

Warning: In order to prevent cabinets overturning or falling down they must be used with the wall attachment device/s provided. Before fixing any cabinets to the wall, ensure the wall construction is capable of taking the weight of the loaded cabinet and that appropriate fixings are used. If in doubt, consult an expert.

Note: Wall fixing screws are not supplied due to different wall types requiring different fixings.

Caution: Some small pieces of hardware could be hazardous to small children. Keep all these items out of reach and do not leave children unattended in the assembly area.



How the cabinet is supplied.

1 3

Standard Cabinet
(600mm Base illustrated, Drawerline similar)

- x4 Single cabinet 94403516 nickel 94403517 black
- x1 Single 92119701
- x2 Per frontal 94405709
- x2 94405304
- x4 94356003 Ø4x16 RHD
- 600W Metal rail 10460810
- x4
- x4
- 1 pack per door 94381720 hinge 95410006 hinge plate
- 4 pack 94401898 5 pack 94401899
- 94356602 Ø3.5x15
- Dummy frontal for Drawerline
- x2 x8 94356602 Ø3.5x15

Note: Wall fixing screws are not supplied due to different wall types requiring different fixings.

2 4

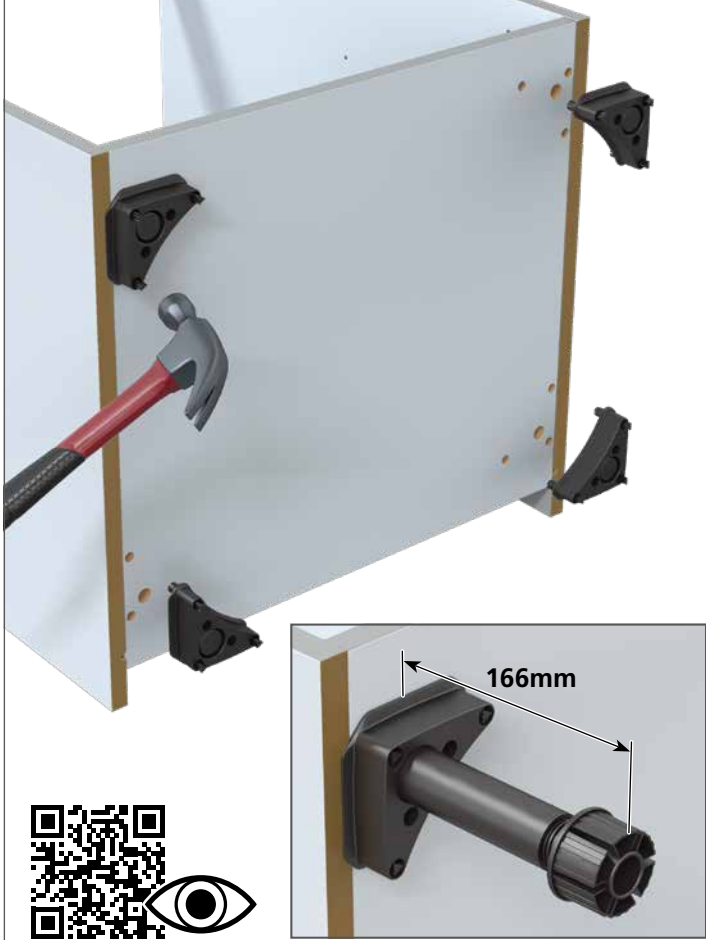
Standard Cabinet
(1000mm Base illustrated, Drawerline similar)

- x5 Double cabinet 94403516 nickel 94403517 black
- x1 92125900 Double cabinets
- x2 Double 92119702
- x2 Per frontal 94405709
- x4 x16 94356602 Ø3.5x15
- x2 94405304
- 1 pack per door 94381720 hinge 95410006 hinge plate
- 4 pack 94401898 5 pack 94401899
- 94356602 Ø3.5x15
- Dummy frontal for Drawerline

Note: Wall fixing screws are not supplied due to different wall types requiring different fixings.



1 ① - ④ Attach legs



2 ① - ④ Insert worktop blocks



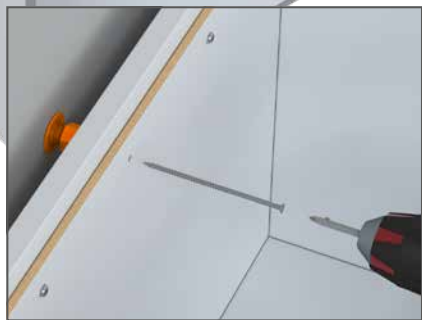
3 ① - ④ Secure to wall



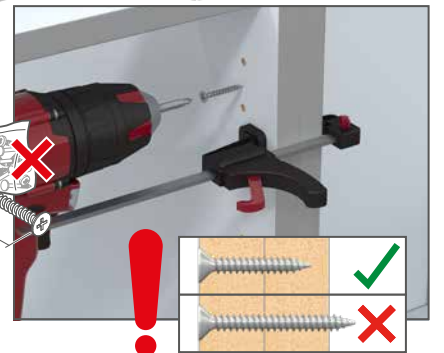
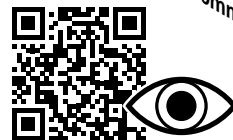
4 ① - ④ Connecting cabinets



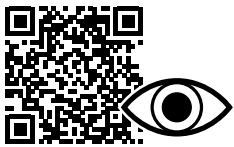
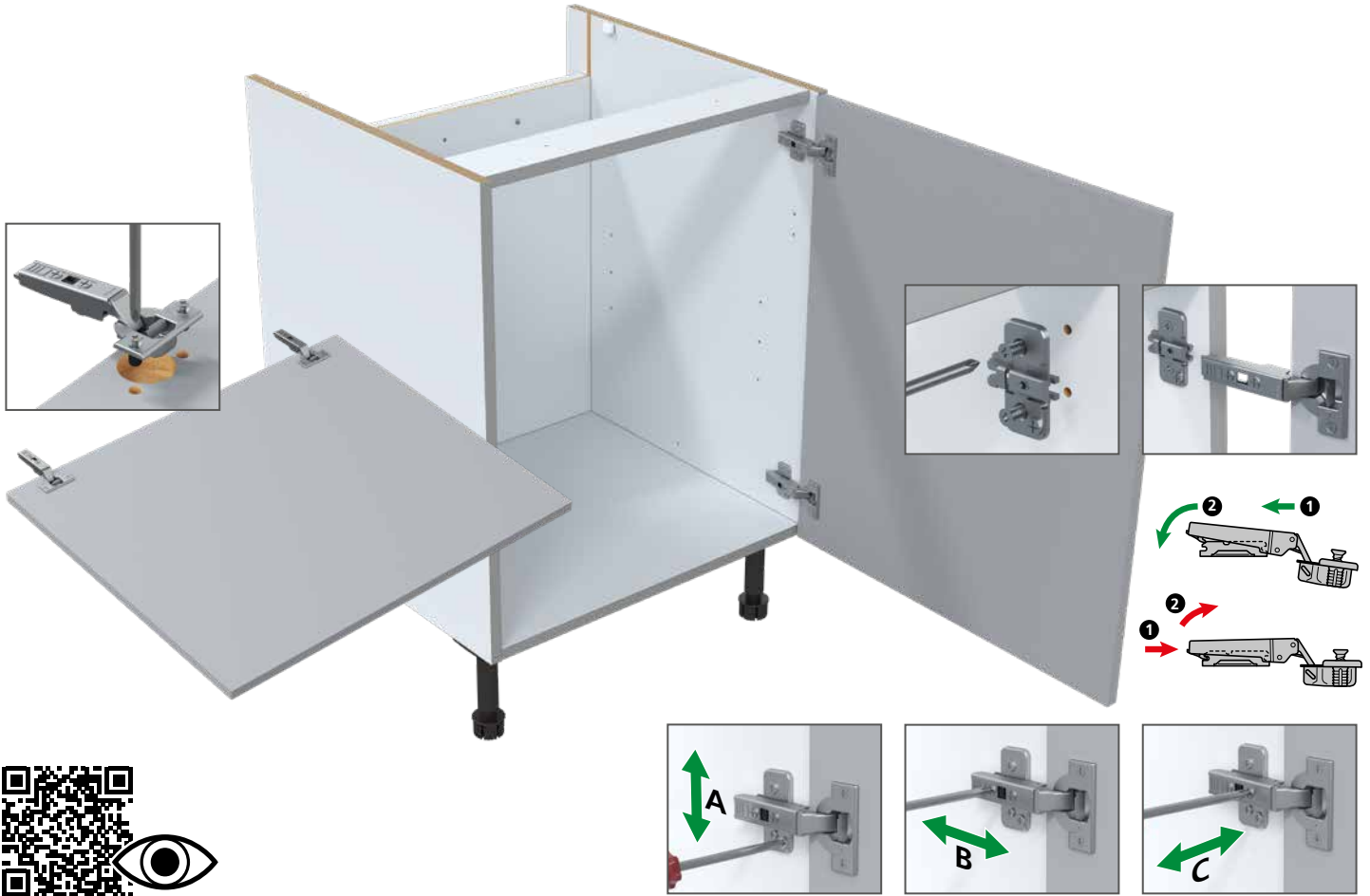
Note: Adjust as needed, max 10mm.



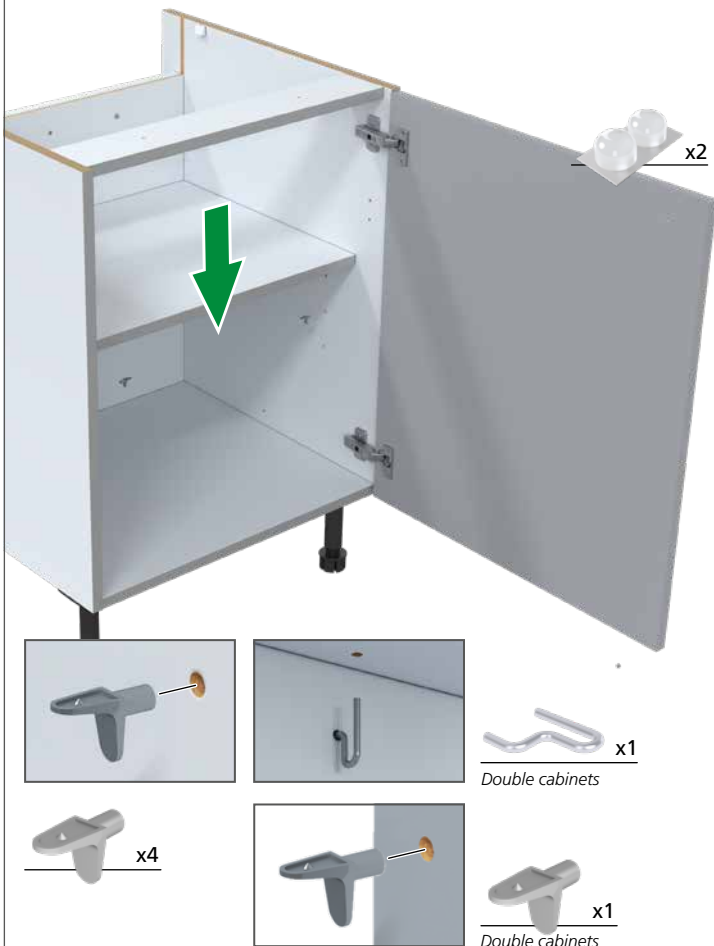
Note: Wall fixing screws are not supplied due to different wall types requiring different fixings.



5 ① - ④ Door and hinge adjustment



6 ① - ④ Fitting shelves, door buffers

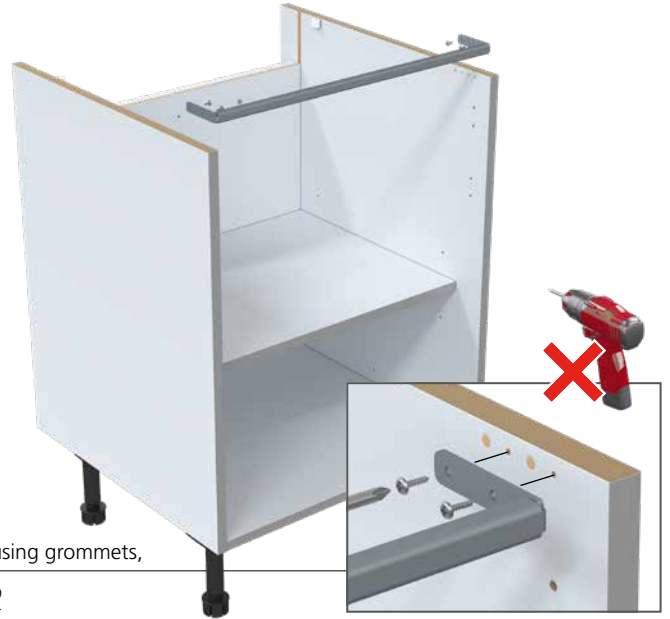


7 ① - ④ Removing back panel if access is required



8 ① ③ Metal rail, 600W cabinet ONLY

1. Remove front rail.



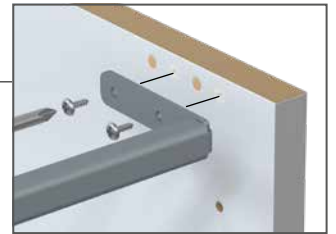
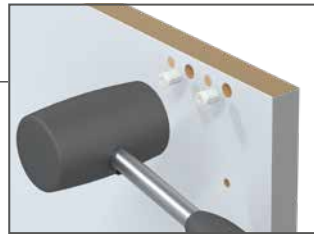
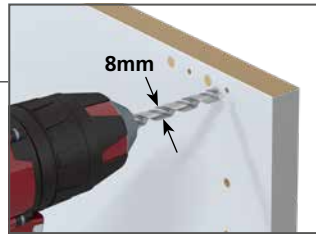
2. Option 1;
Secure metal rail **without** using grommets,

x4 94356003 Ø4x16 RHD

2. Option 2;
Secure metal rail
using grommets.



600W Metal rail 10460810



9 ③ ④ Fitting a dummy frontal

