

Pocket Doors

MAI00027 R0

1952mm Pocket Doors

2144mm Pocket Doors



INSTALLATION GUIDE



Please read these instructions carefully before proceeding.

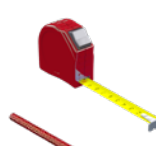
This instruction is used in conjunction with the Installation Guide.

Important: Installation shall be carried out exactly according to the manufacturer's instructions otherwise a safety risk can occur if incorrectly installed.

Warning: In order to prevent cabinets overturning or falling down they must be used with the wall attachment device/s provided. Before fixing any cabinets to the wall, ensure the wall construction is capable of taking the weight of the loaded cabinet and that appropriate fixings are used. If in doubt, consult an expert.

Note: Wall fixing screws are not supplied due to different wall types requiring different fixings.

Caution: Some small pieces of hardware could be hazardous to small children. Keep all these items out of reach and do not leave children unattended in the assembly area.

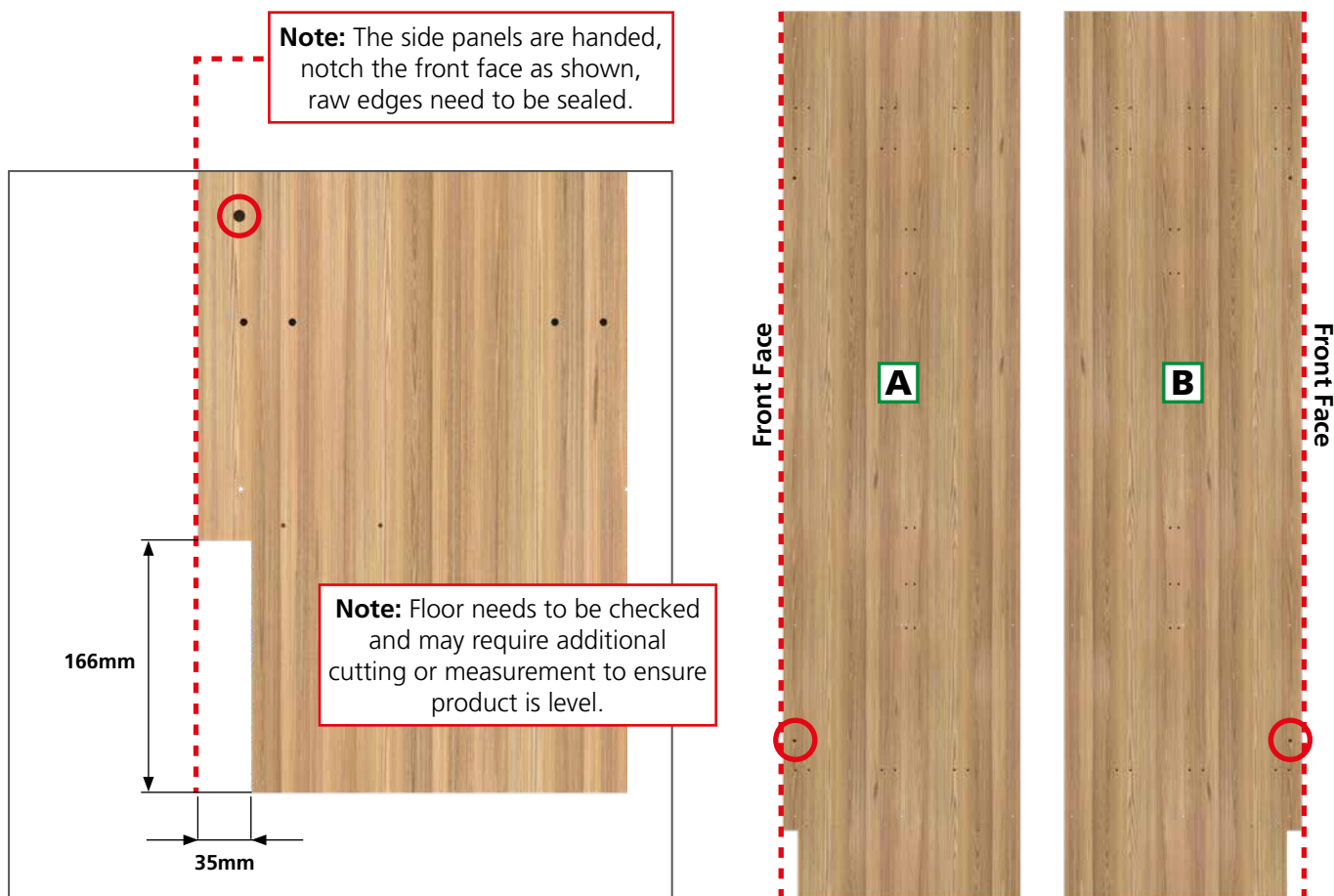


2mm
8mm

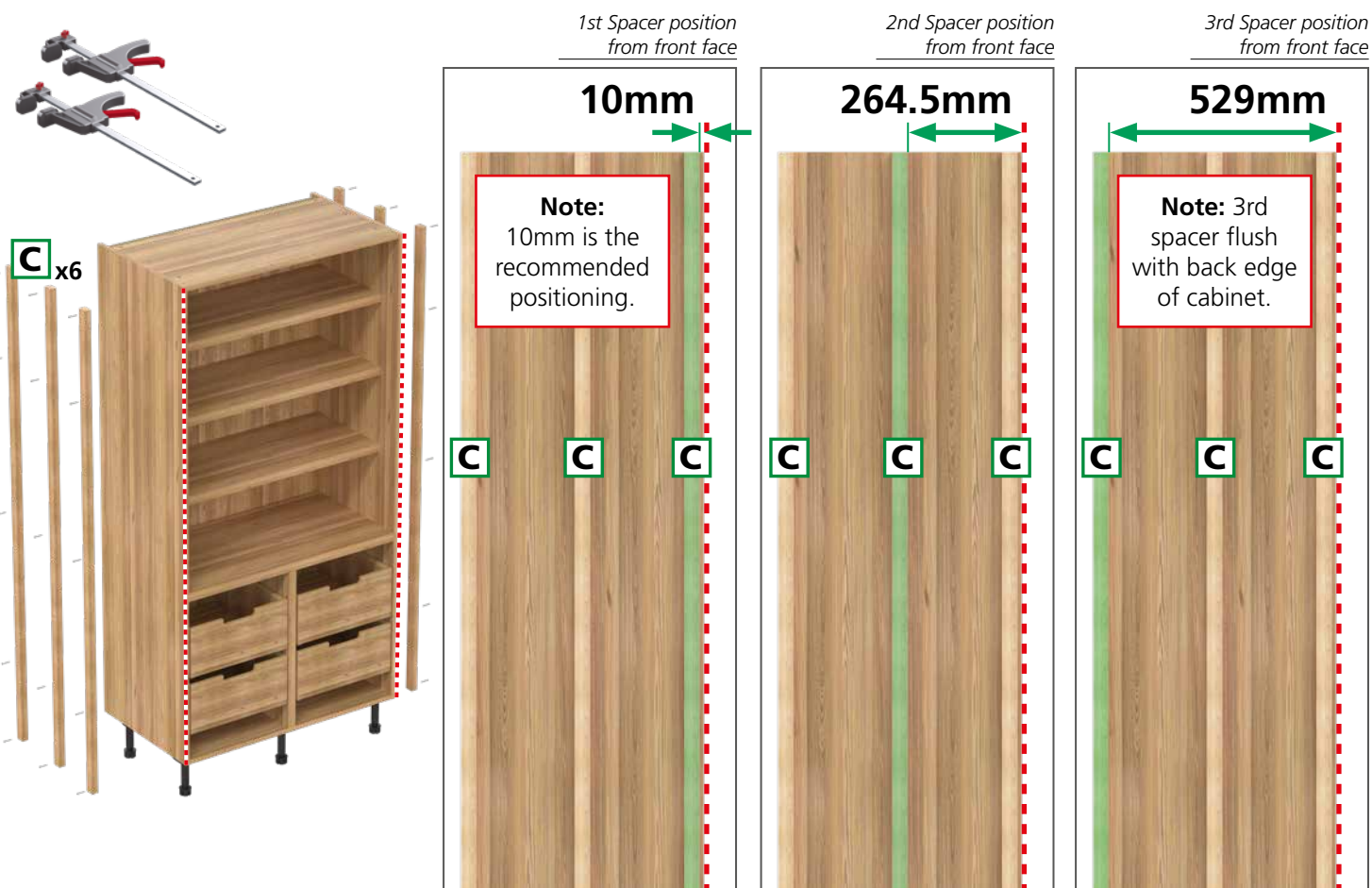
How the pocket doors are supplied.



1 Notching side panels



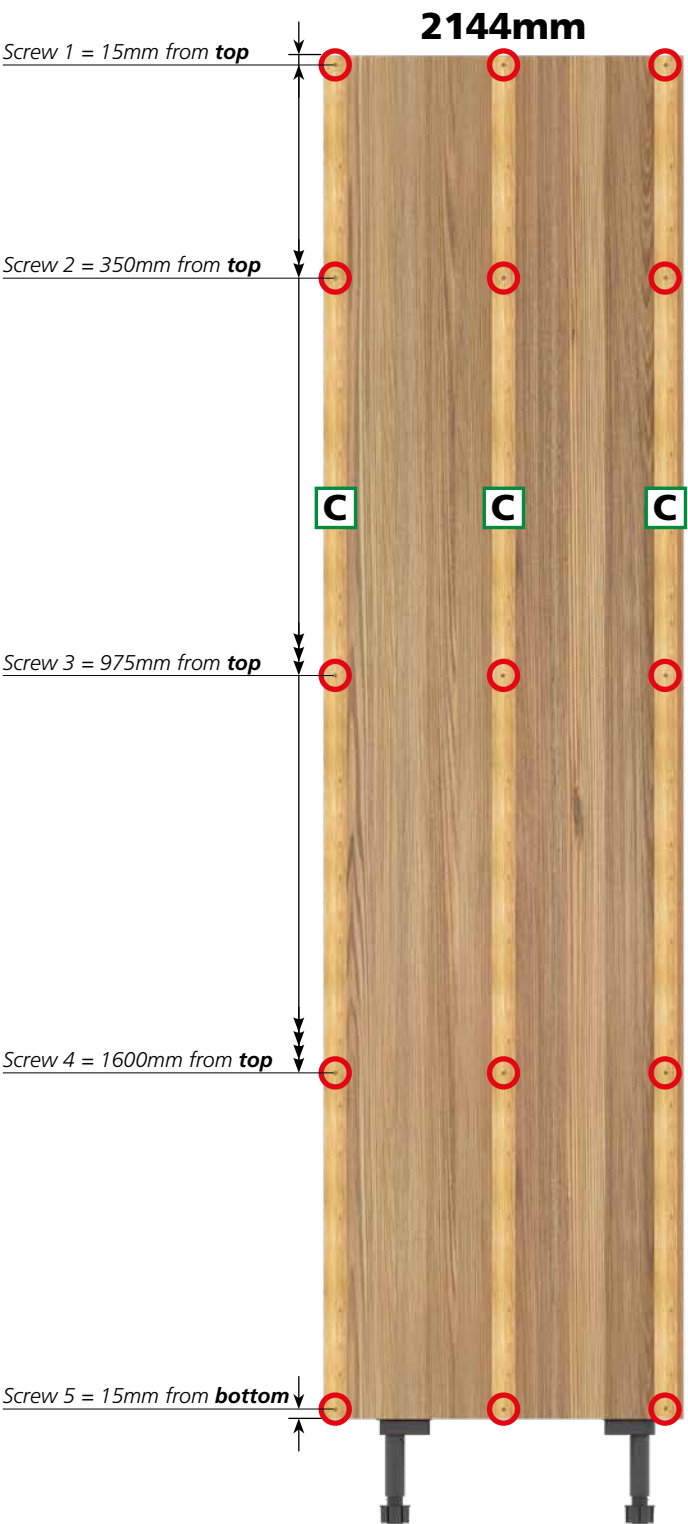
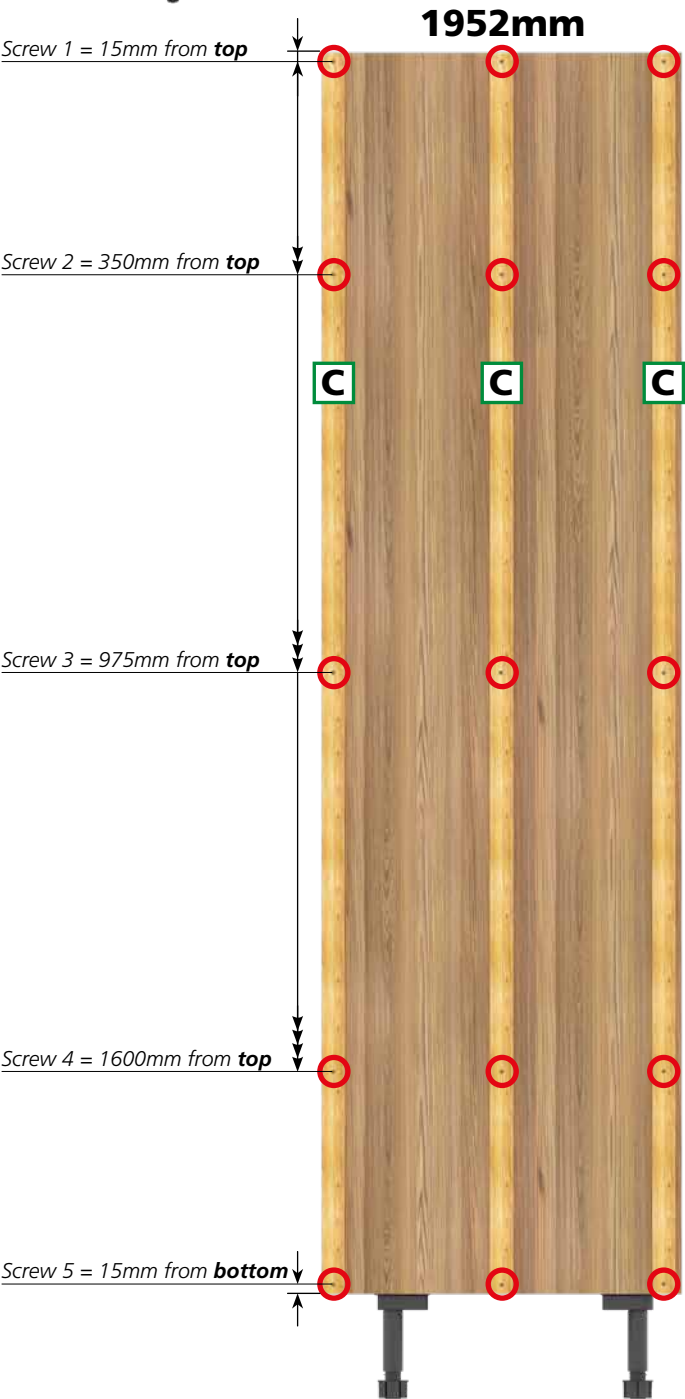
2a Panel spacer locations



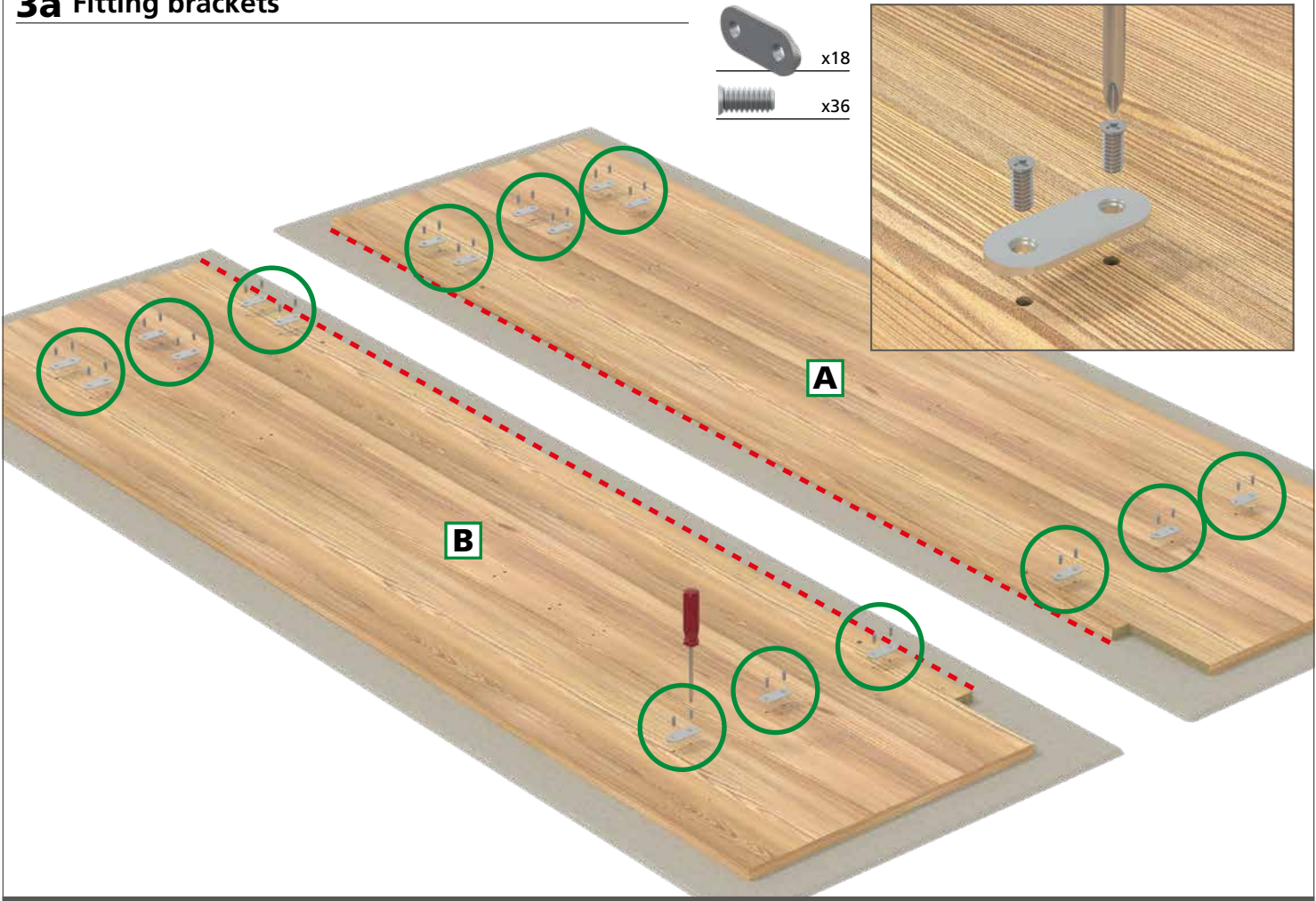
2b Panel spacer fixing



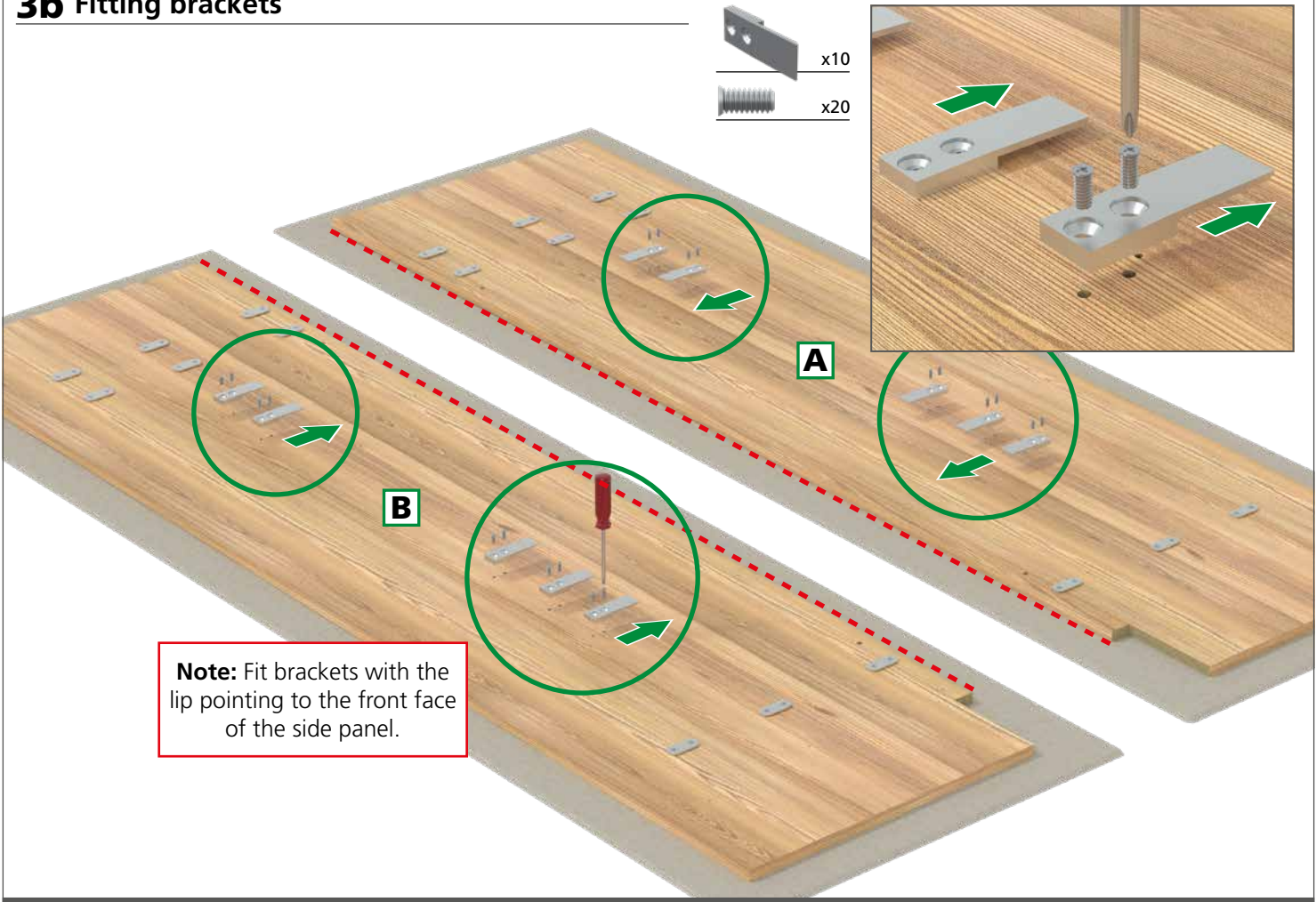
Note: Check the fixing between spacers and side panel of cabinet and ensure no gap/space, additional screws may be required to fix.



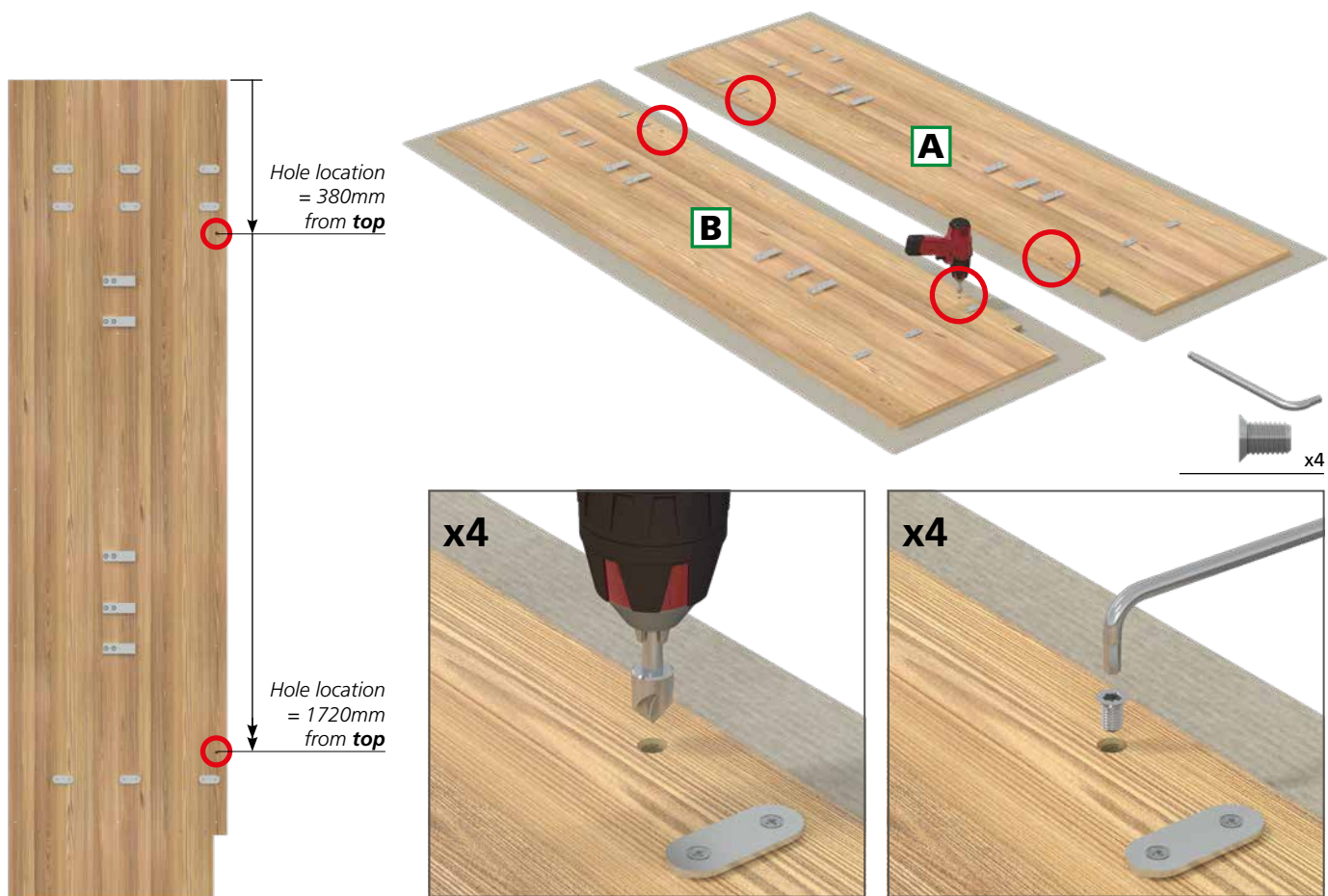
3a Fitting brackets



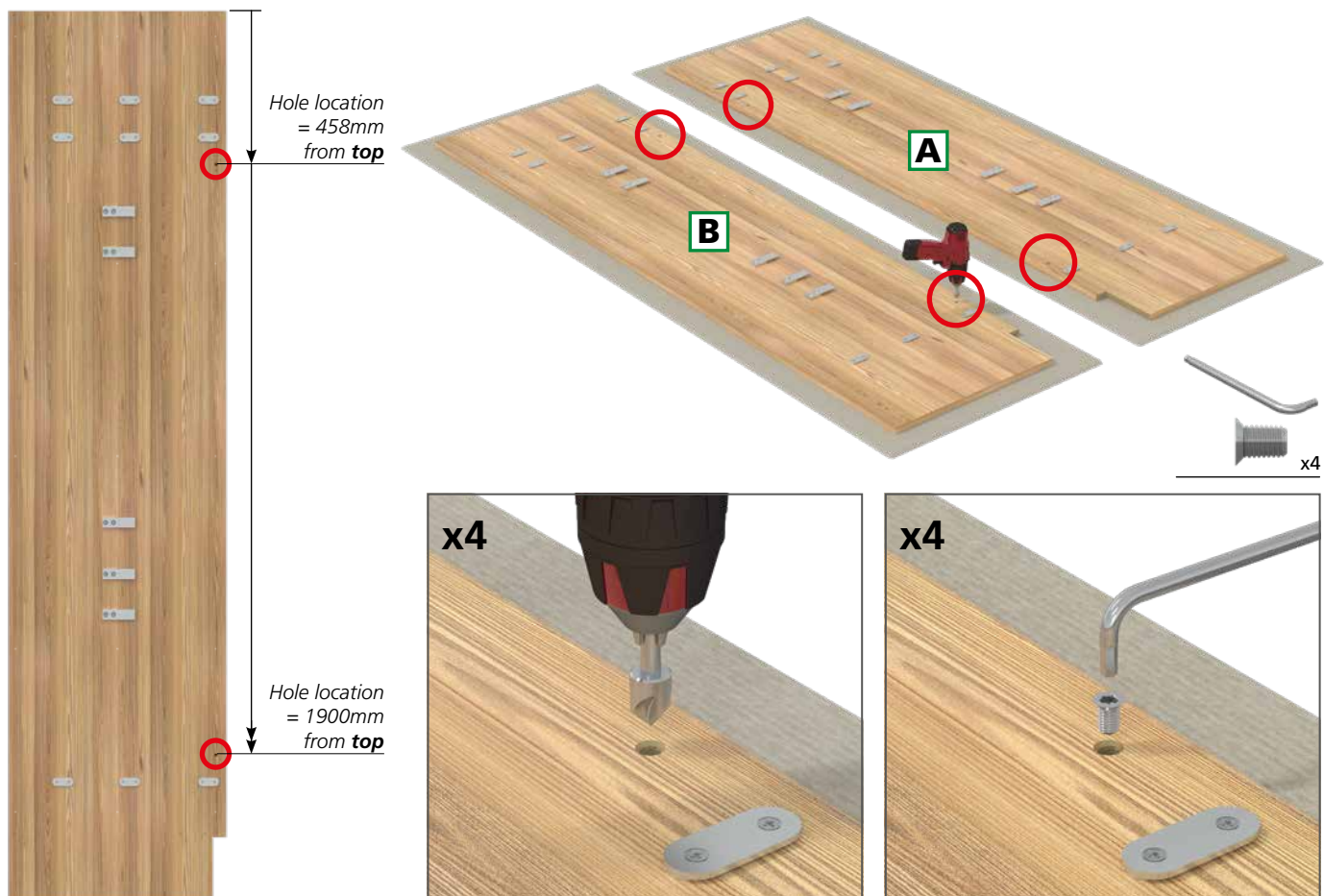
3b Fitting brackets



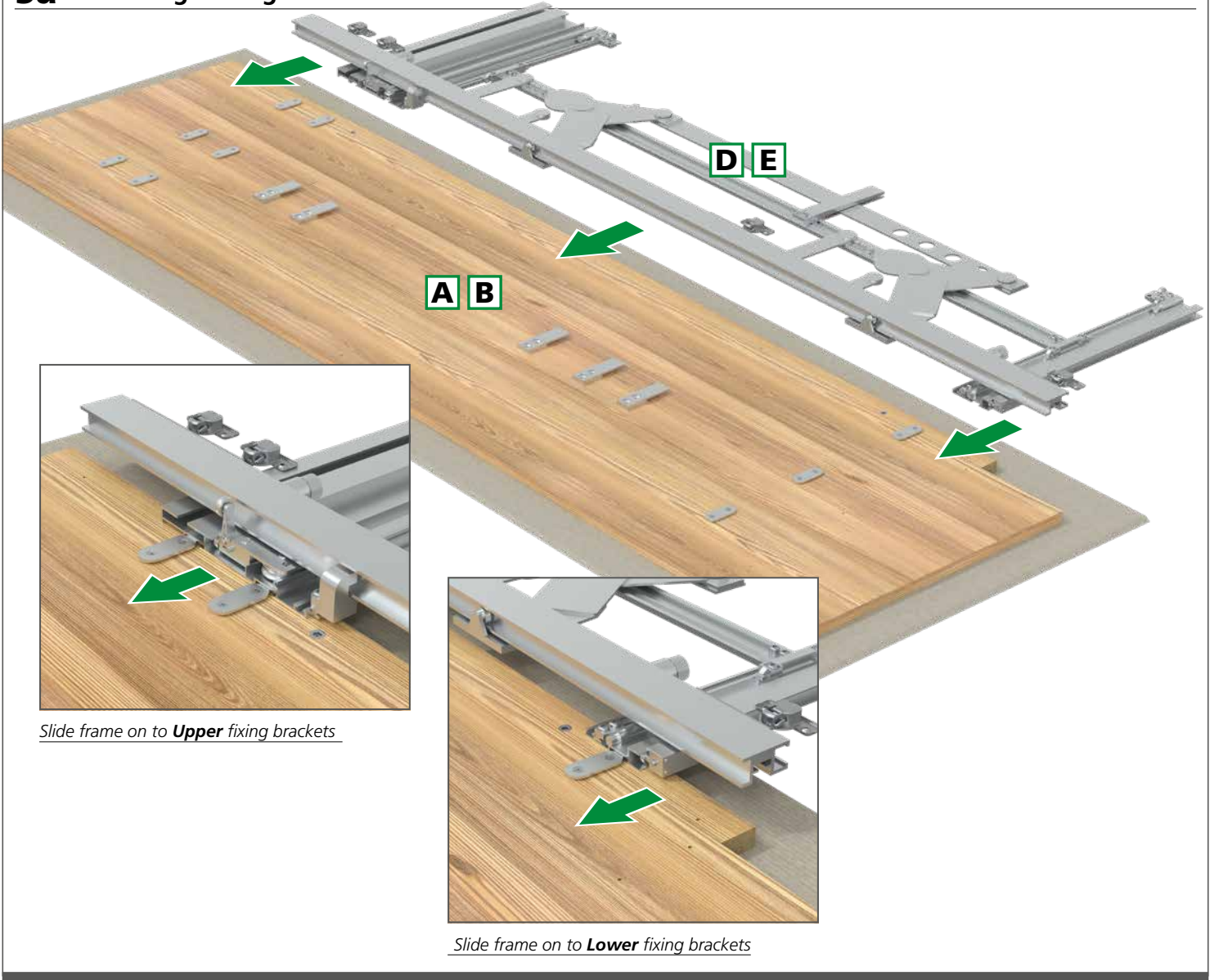
4a Counter sink holes and fit grommet - 1952mm



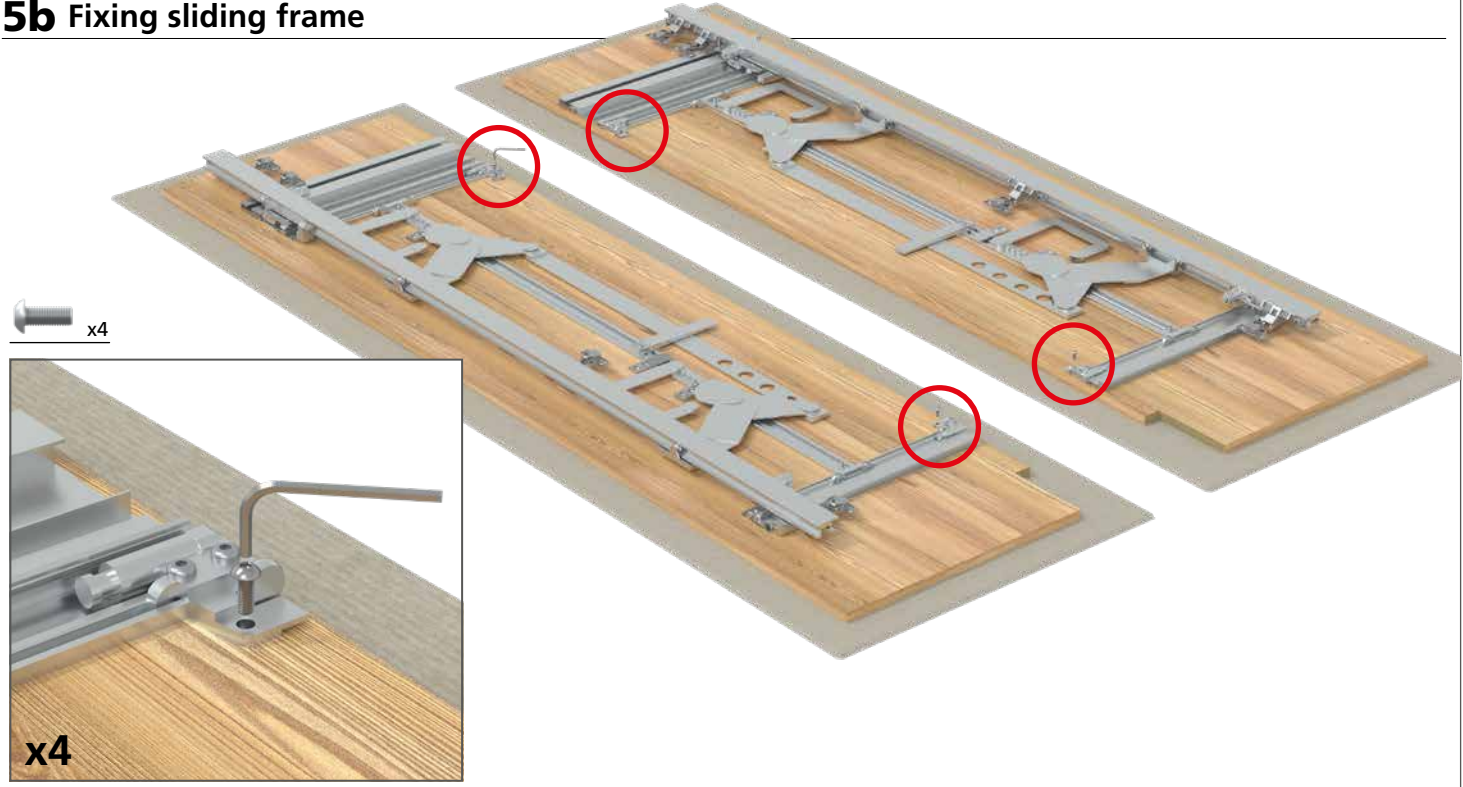
4b Counter sink holes and fit grommet - 2144mm



5a Mounting sliding frame



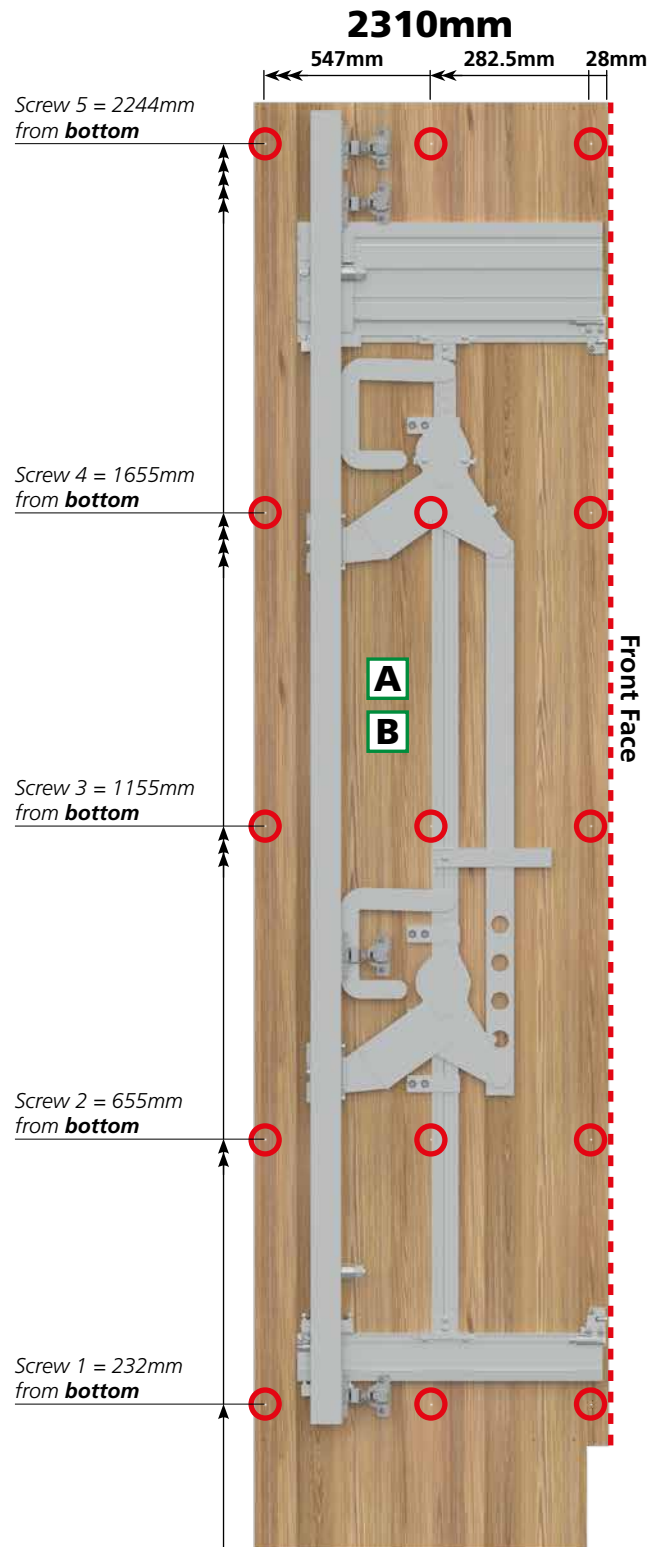
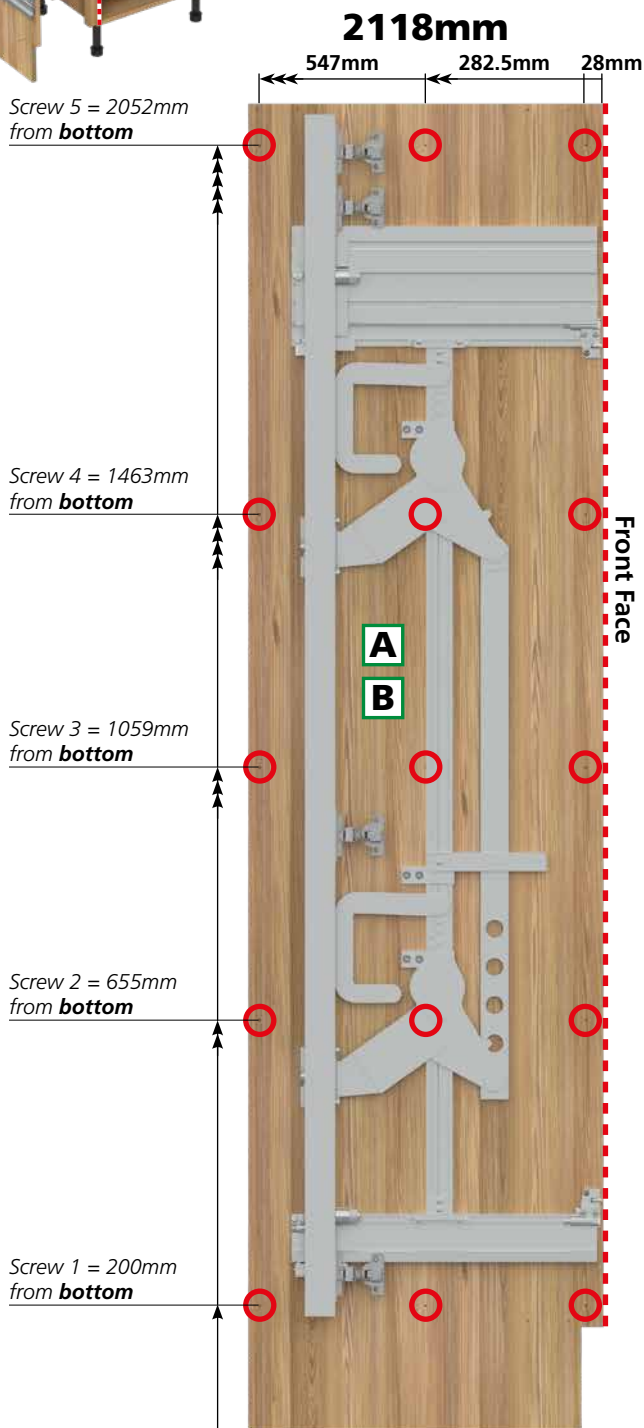
5b Fixing sliding frame



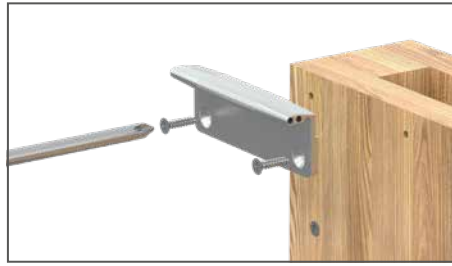
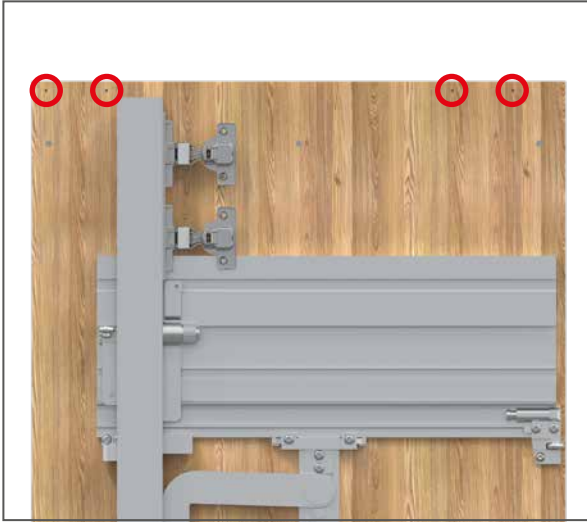
6 Fitting side panels



Note: Check the fixing between side panel and spacers and ensure no gap/space, additional screws may be required to fix.



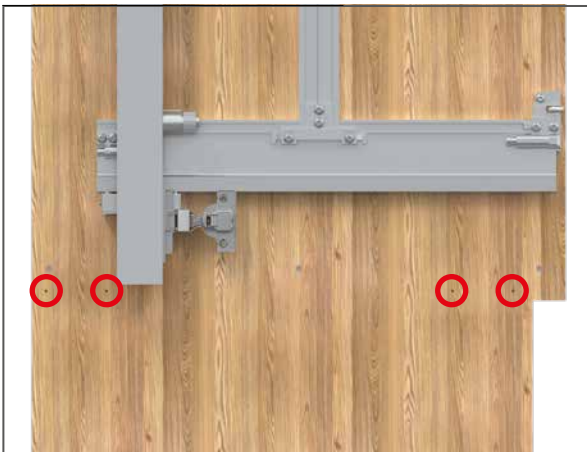
7 Side panel clips



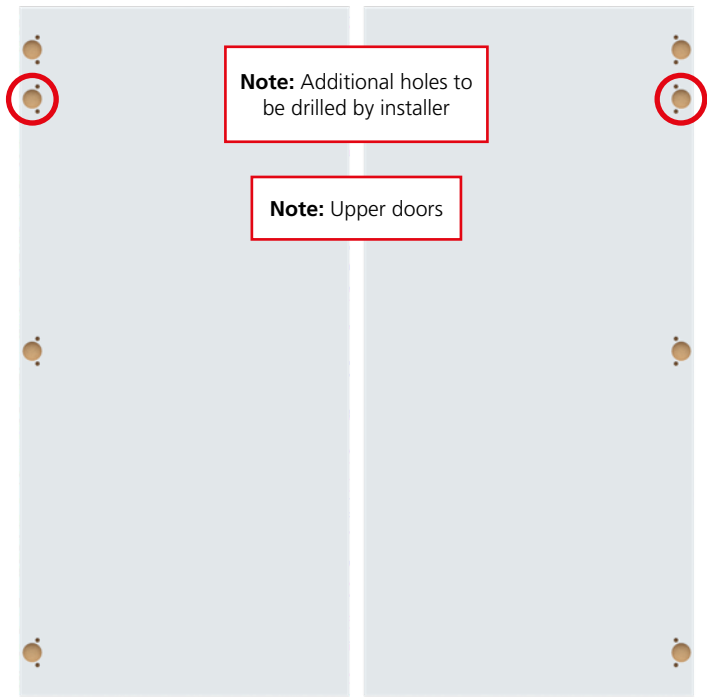
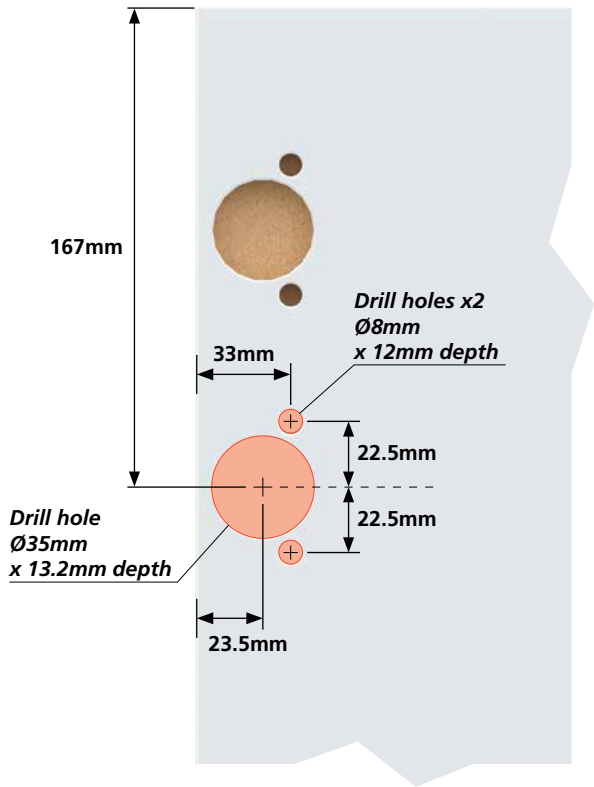
Top clip positions



Bottom clip positions



8 Upper doors - Drill extra hinge positions

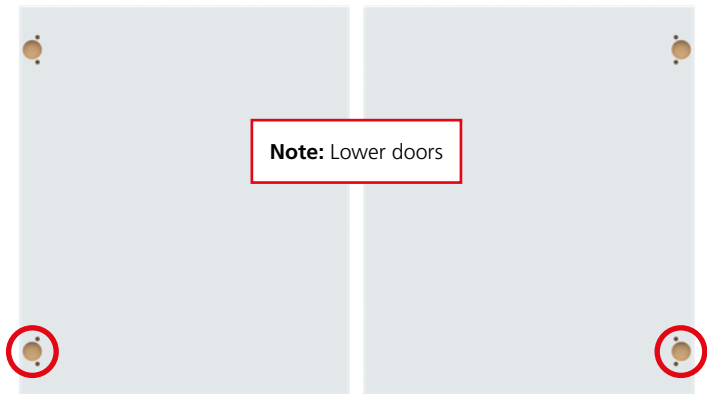
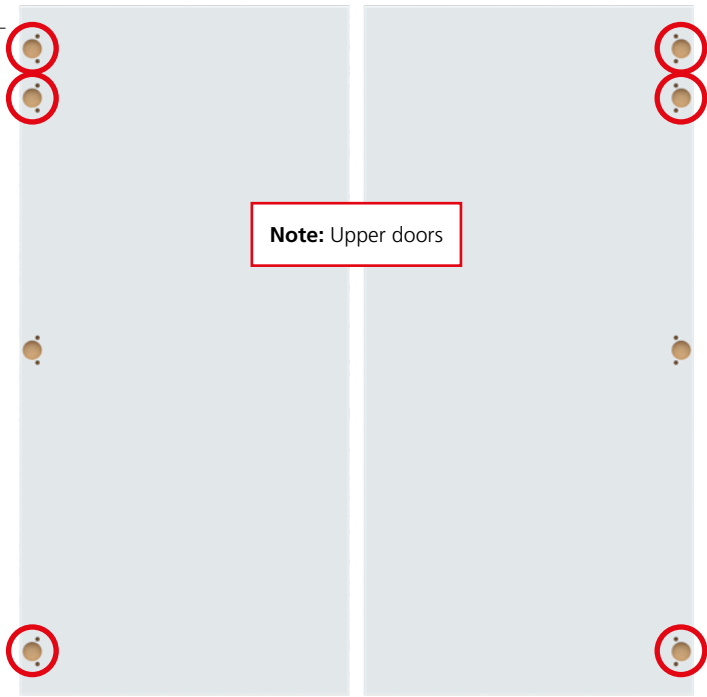


9 Doors - Install Dowels

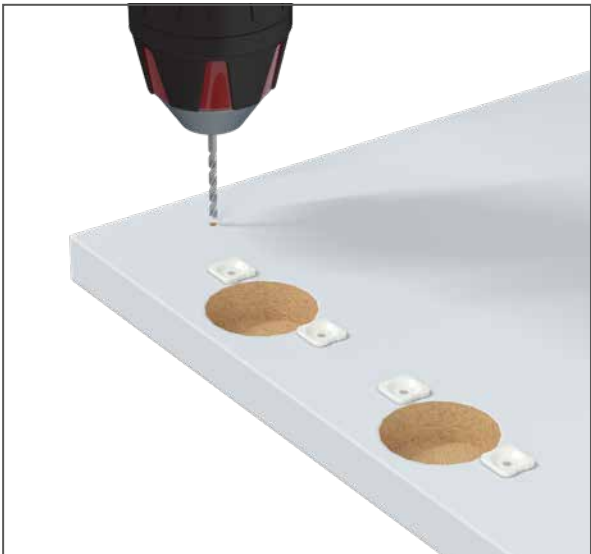
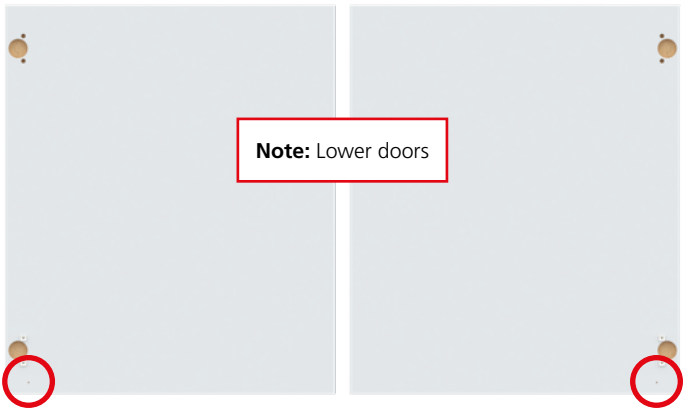
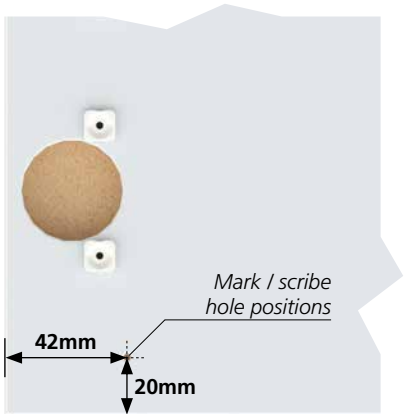
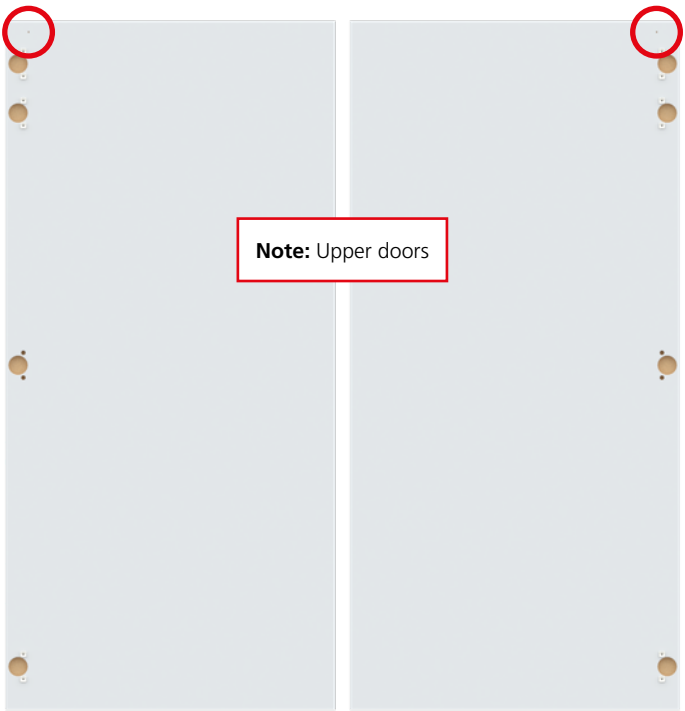
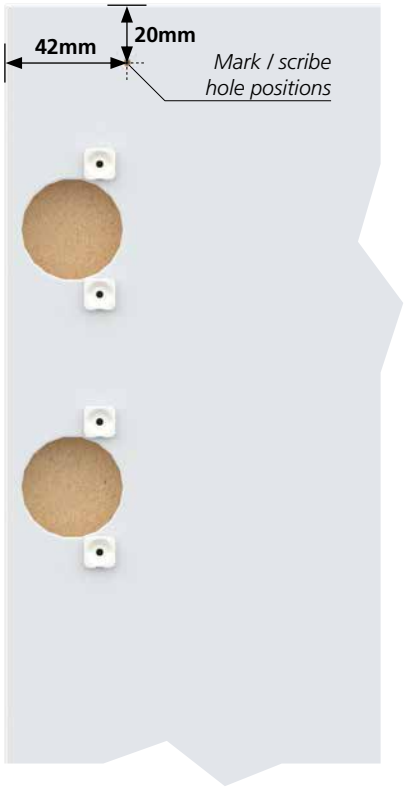


x16

Insert dowels into the Ø8mm holes where highlighted



10 Fit door pins



Drill pilot holes - Ø2mm x 5mm depth



11 Fit doors to frame

Locate and secure doors on to hinges

 x16



Note: Install top doors first.



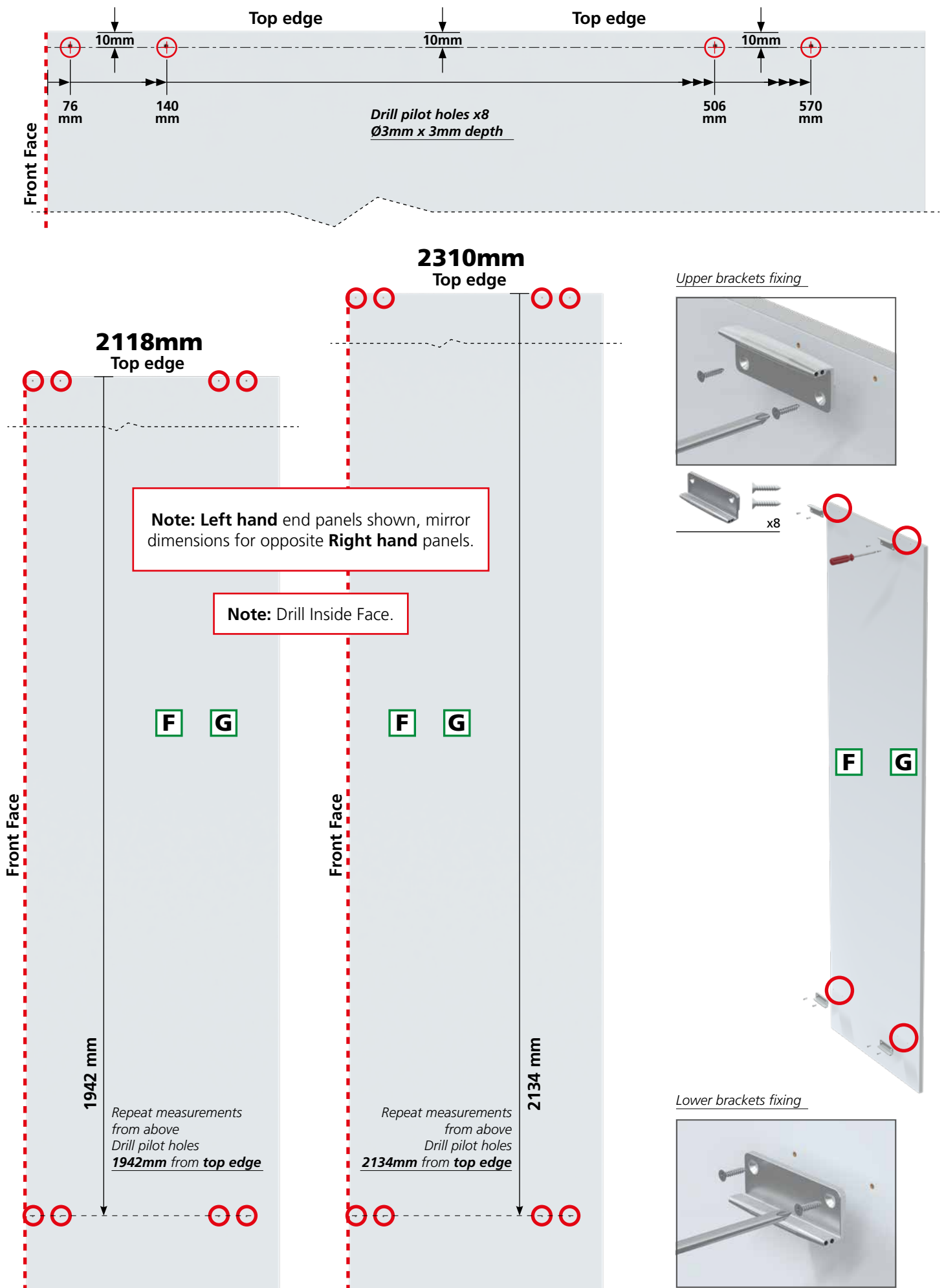
Highlighted hinge holes not required

Once bottom door is connected to hinge immediately fix door straps between top and bottom doors

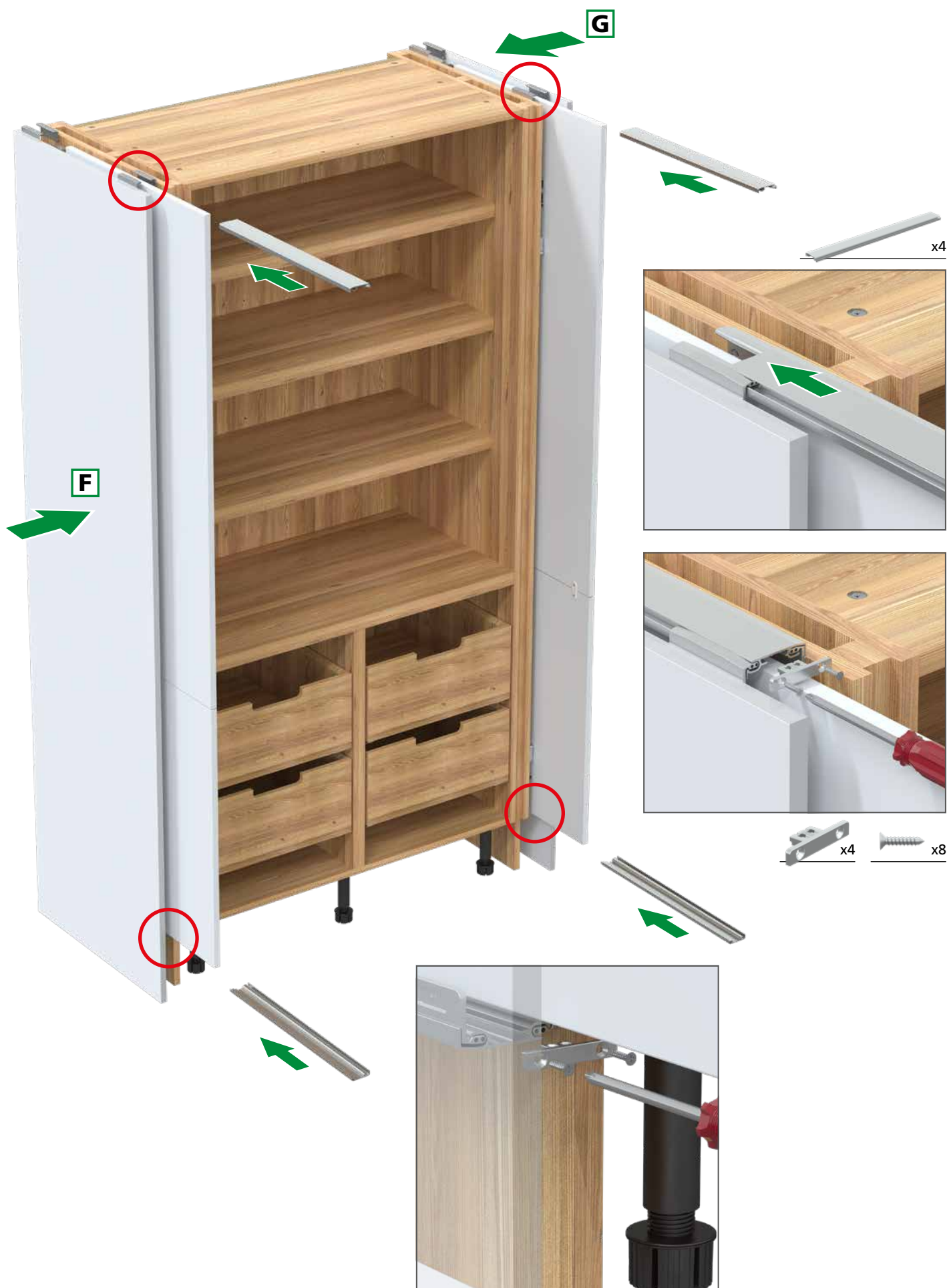
 x4



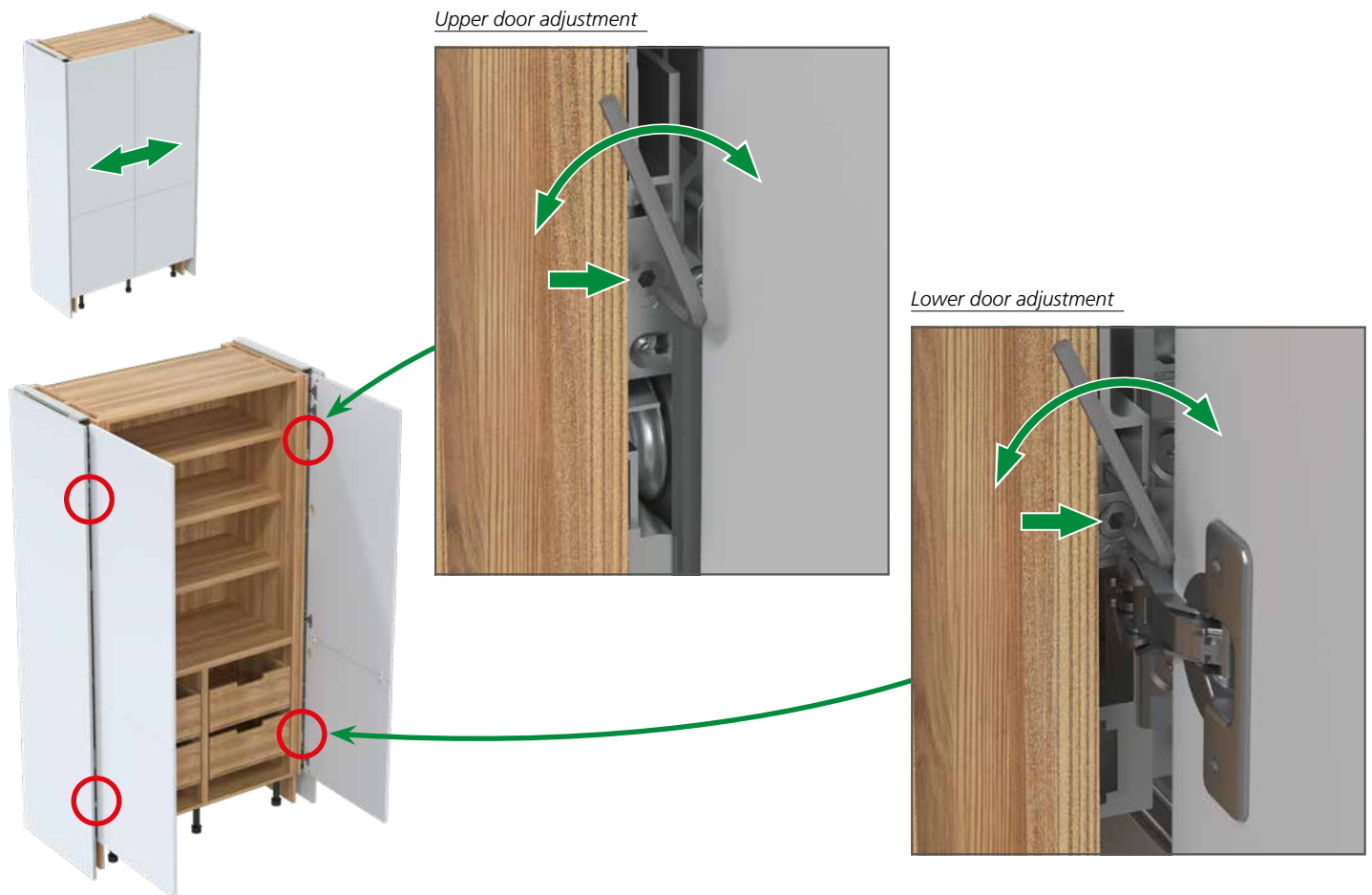
12 End panel drilling for top and bottom brackets



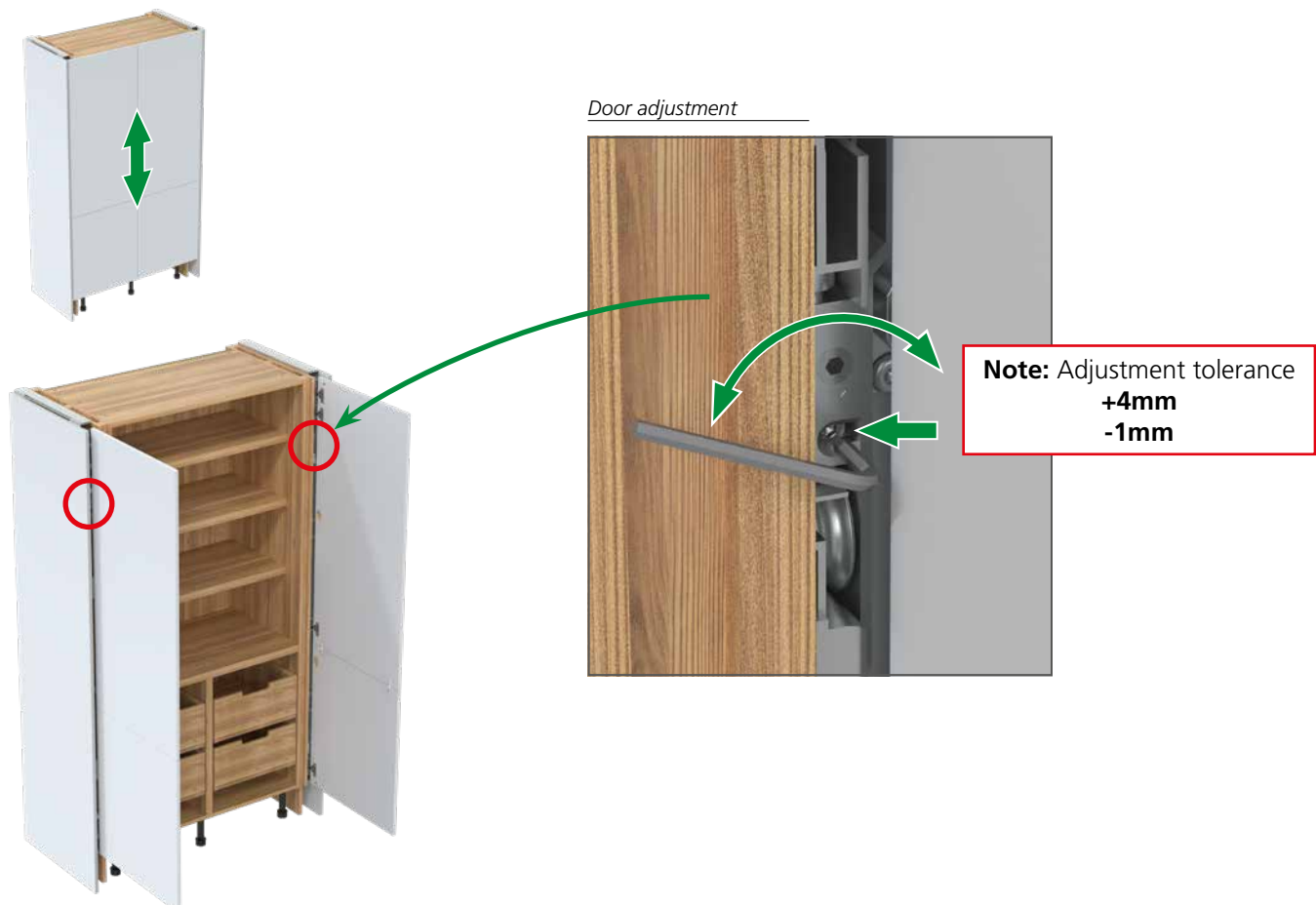
13 Connection plates



14 Door adjustment - left to right



15 Door adjustment - up & down



16 Door adjustment - tilt adjustment



Upper door tilt adjustment



Lower door tilt adjustment



17 Cover caps



x6

Fit steel flange cover caps



x2

Fit upper plastic cover caps



x2

Fit lower plastic cover caps



18 Fit soft door closes



19 Fixing hinge blank covers

