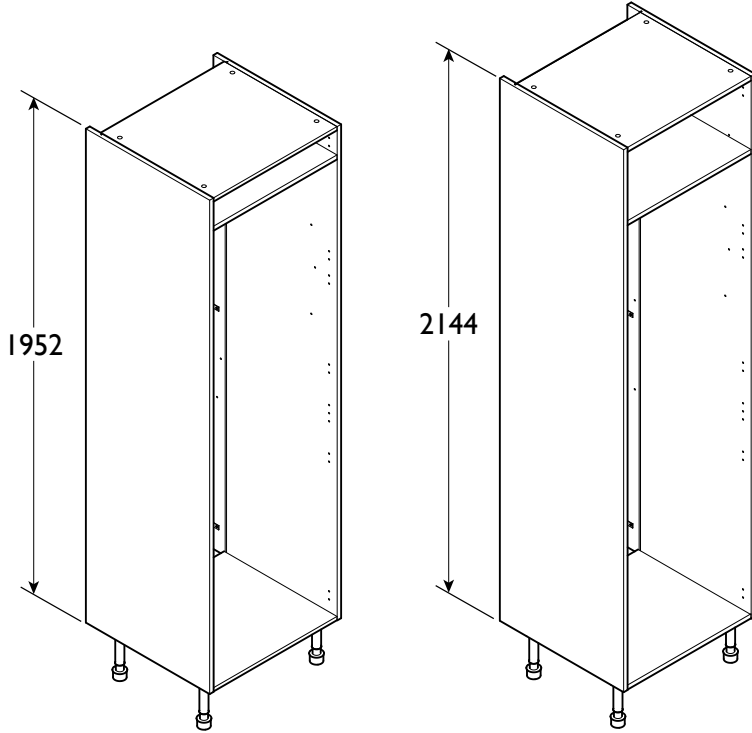
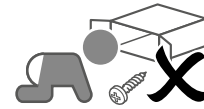


2118mm / 2310mm Tall Cooling Unit

94443787_0923



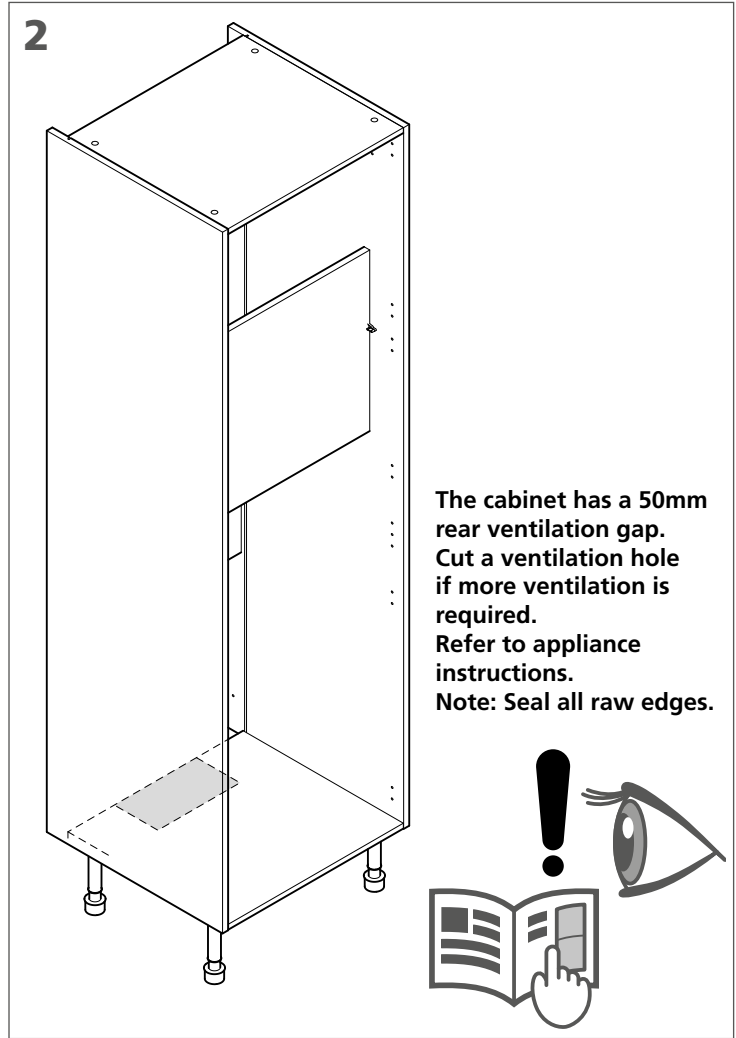
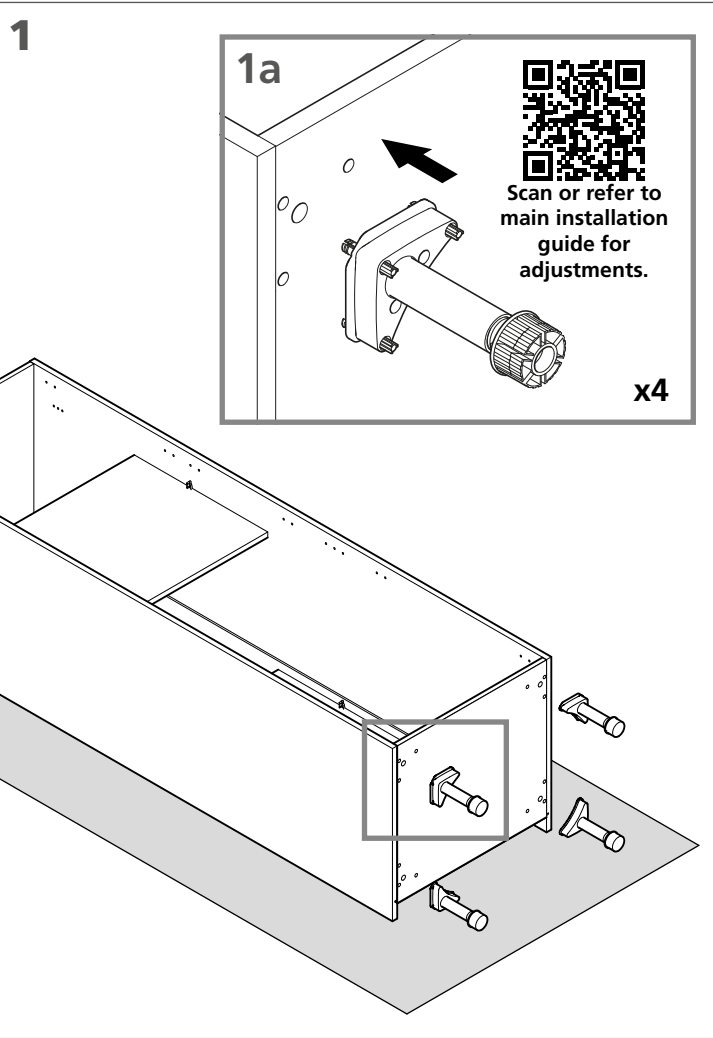
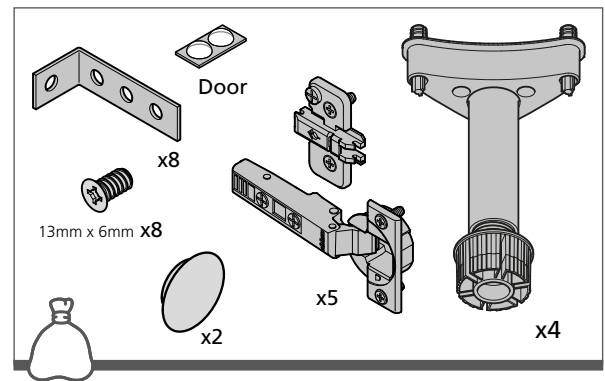
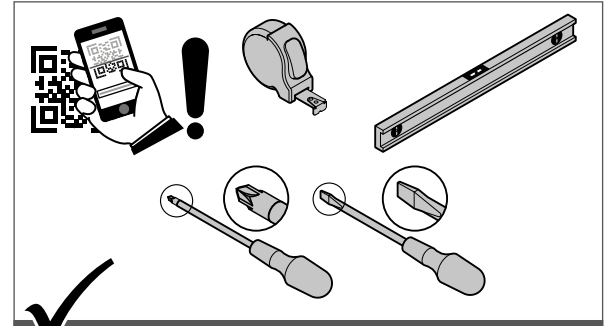
2118mm Standard Housing

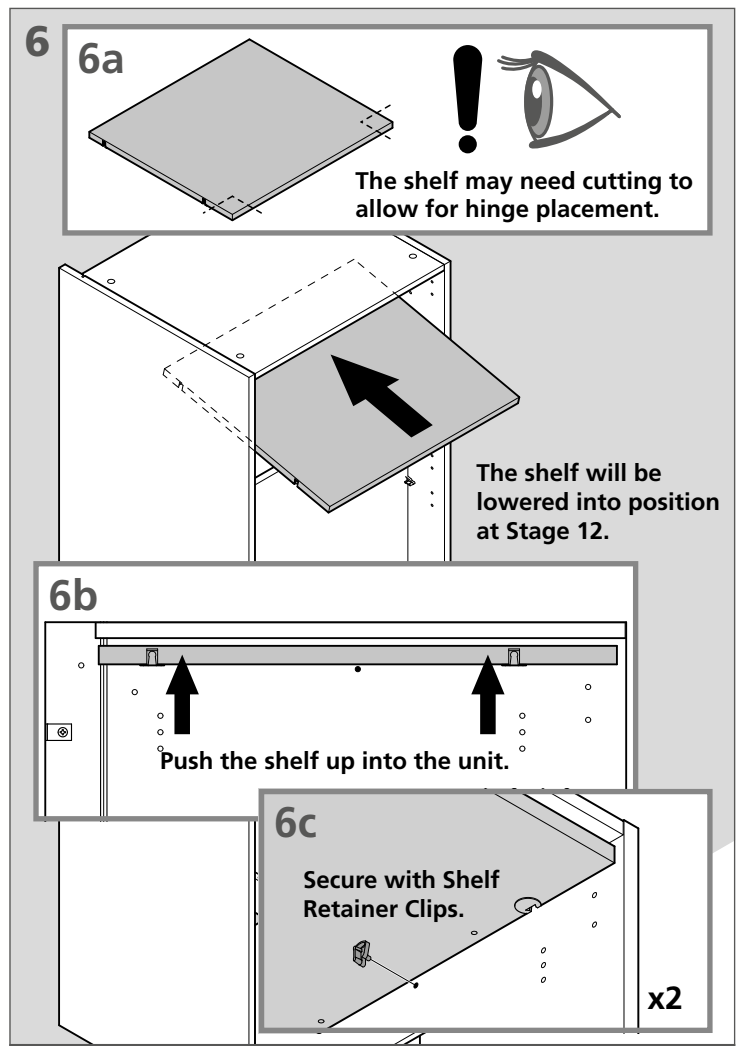
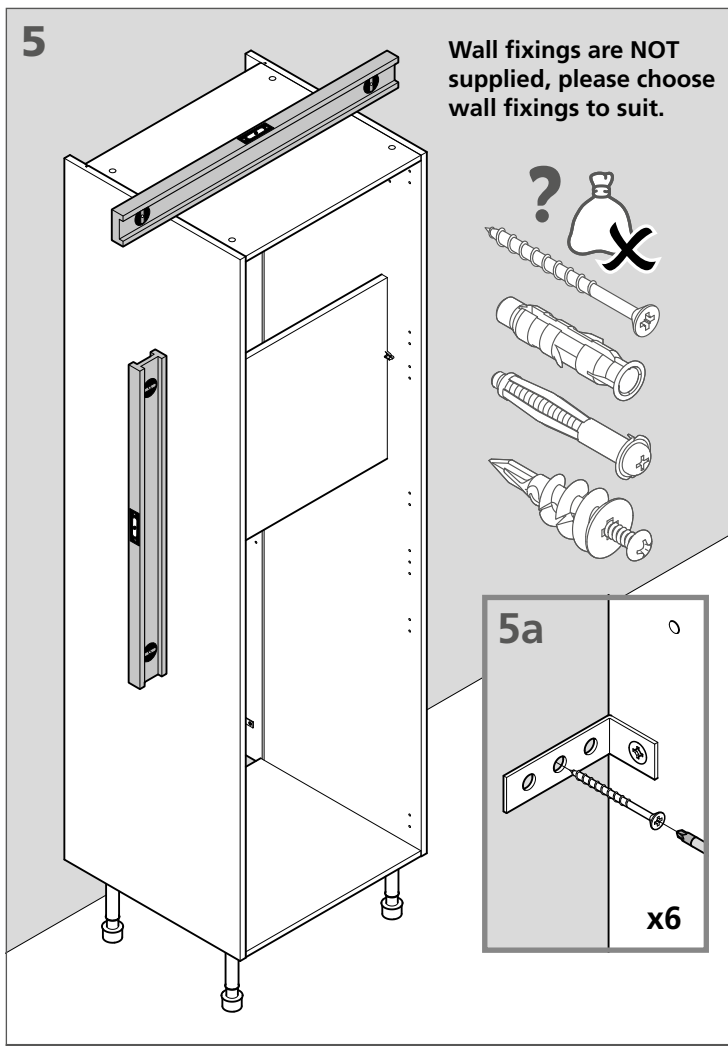
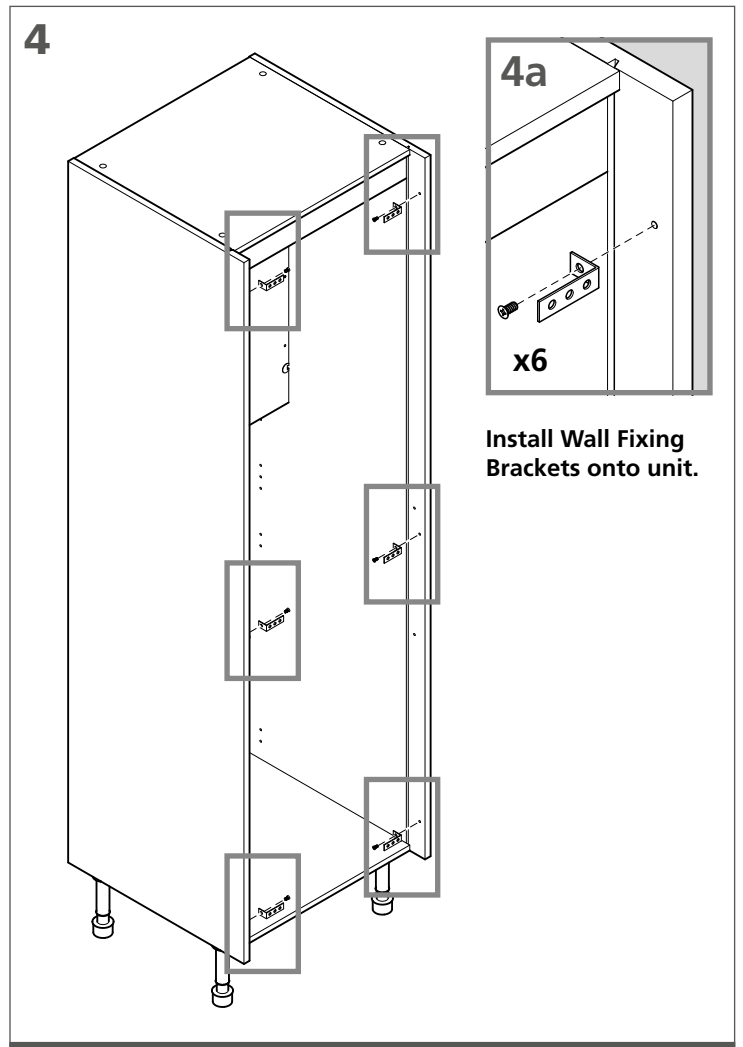
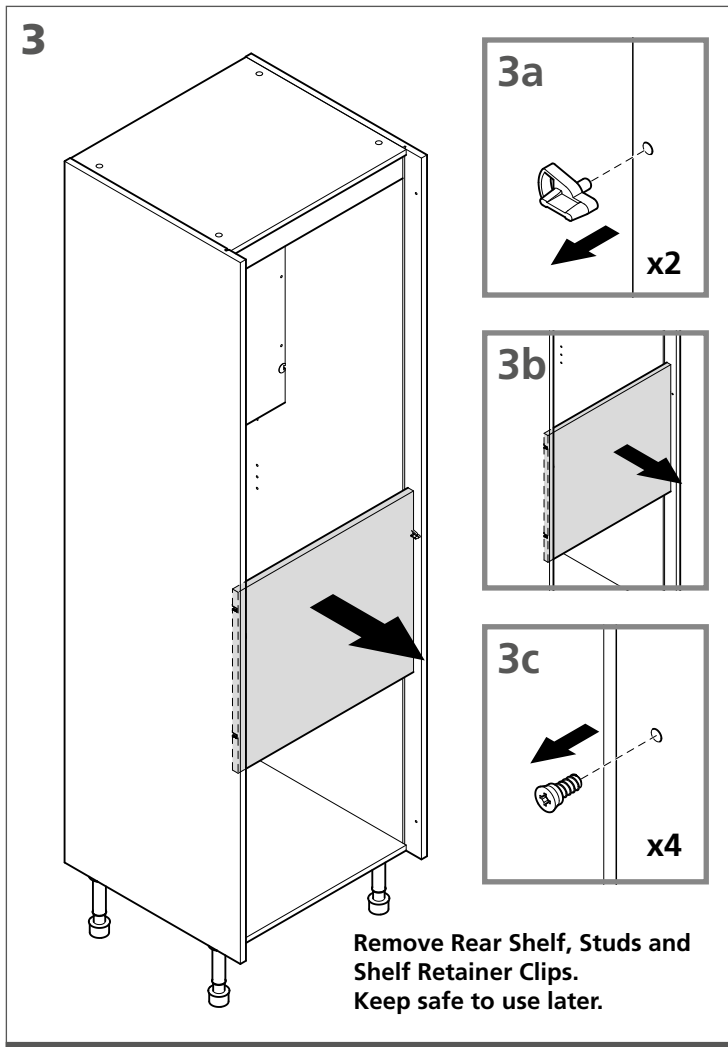
2310mm Tall Standard Housing



Animation & online instructions

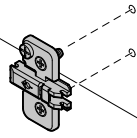
Section 16-17 list all housing type configurations.



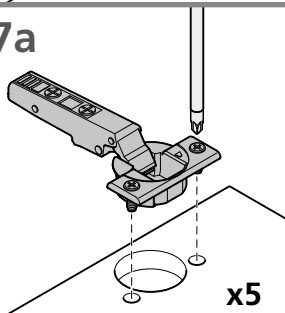


7

Fit the Hinge Plates onto the cabinet where required.

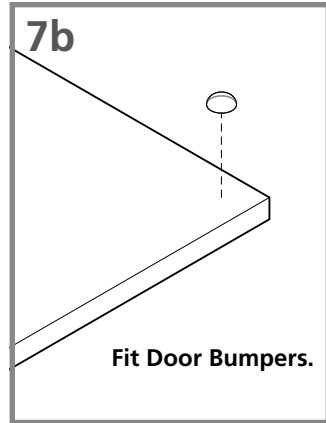


7a



Fit all the Hinges onto the doors.

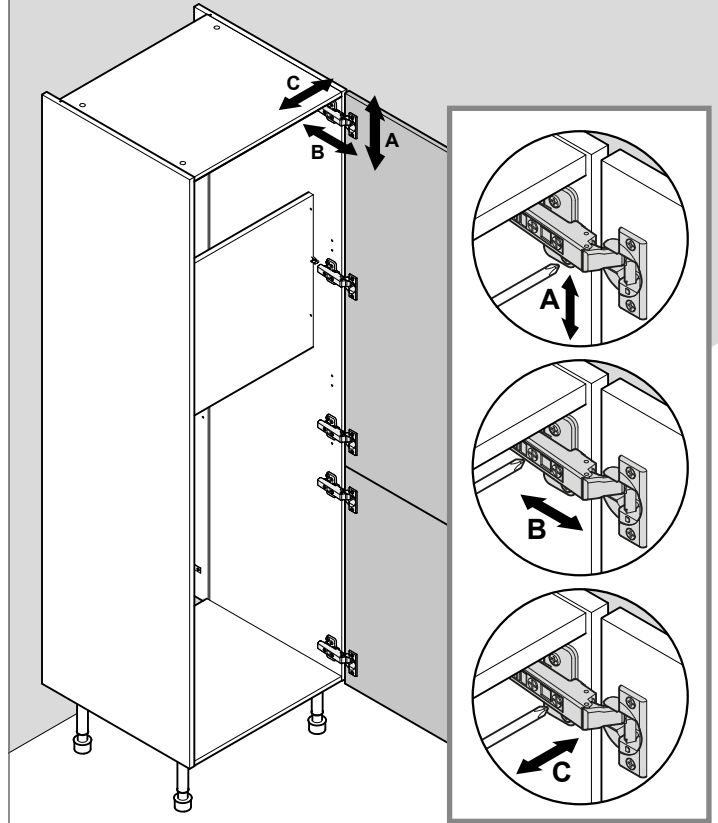
7b



Fit Door Bumpers.

8

Fit the Hinges onto the unit and adjust to level Doors. Note: Check the appliance to determine door fitting. Do not use hinges when doors fit directly to the fridge freezer. Fit doors after appliance has been secured into place.



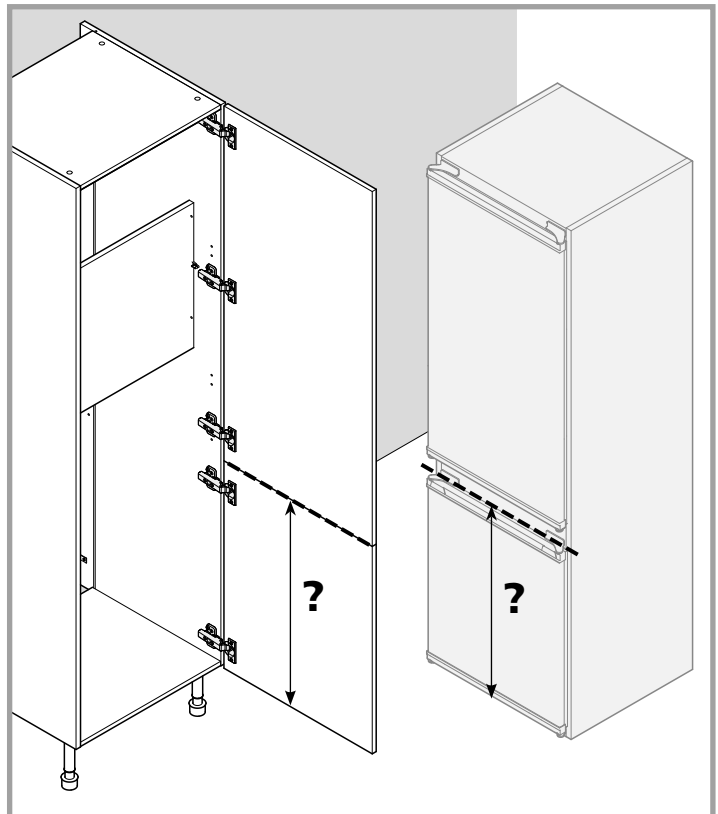
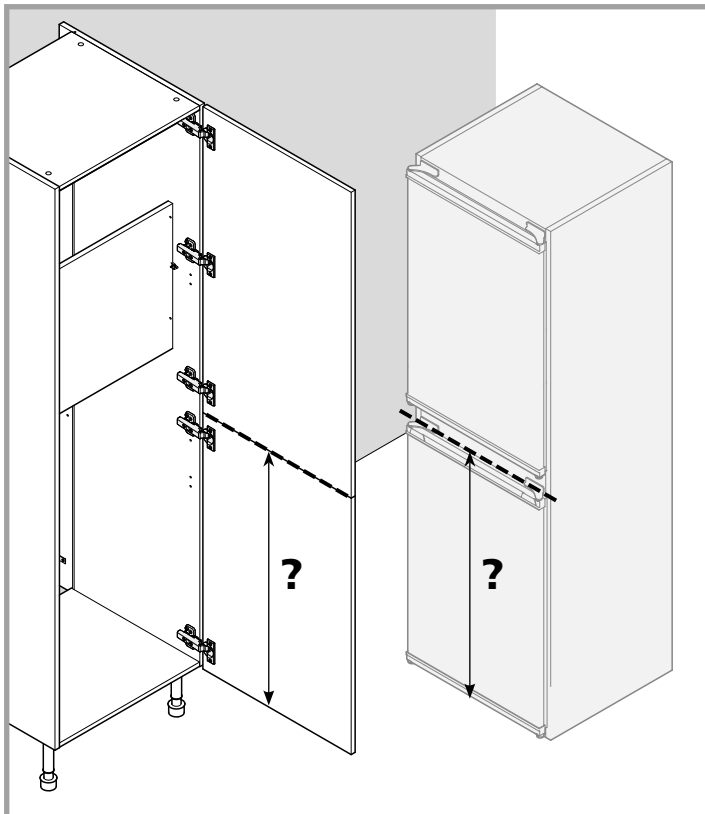
9

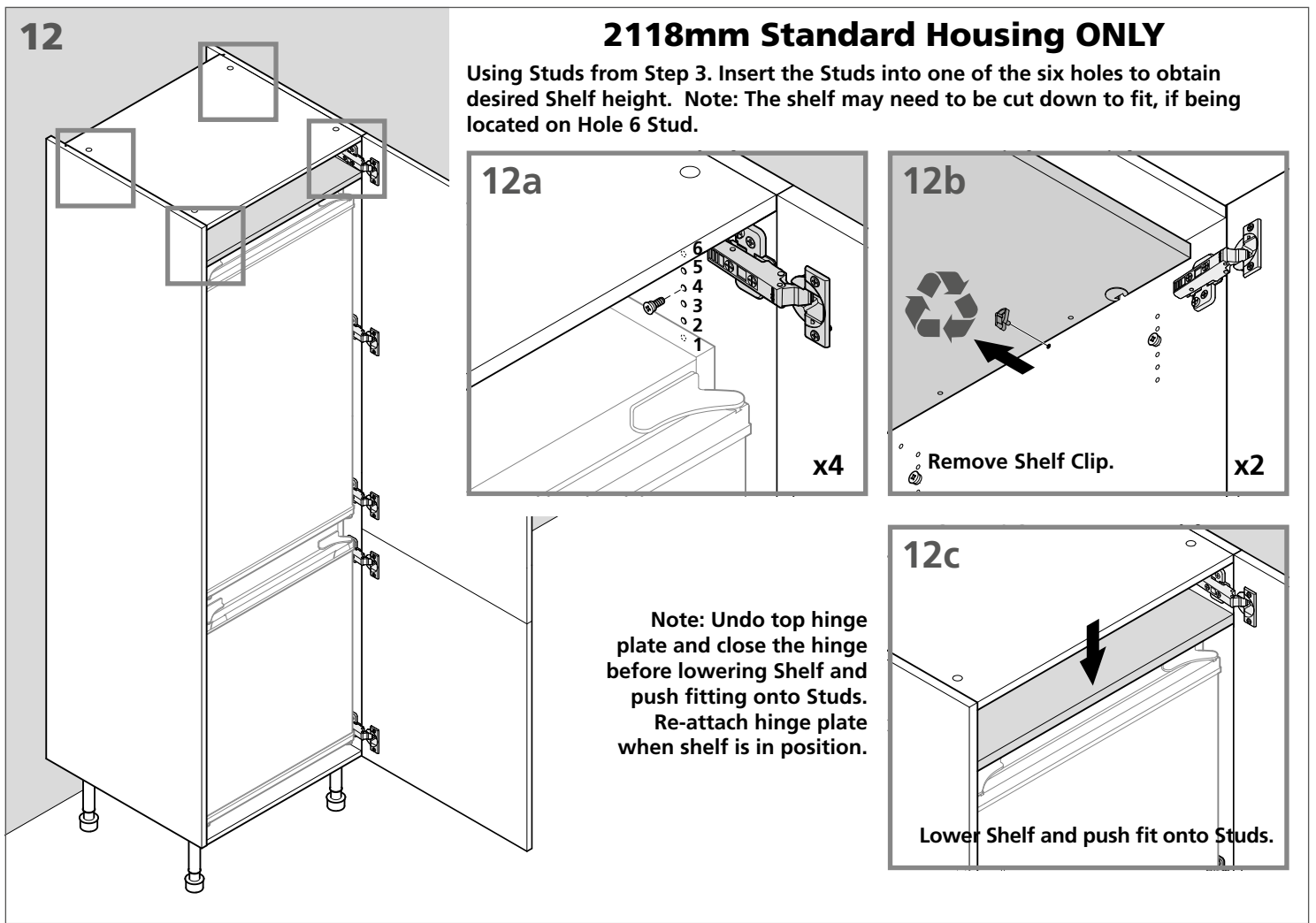
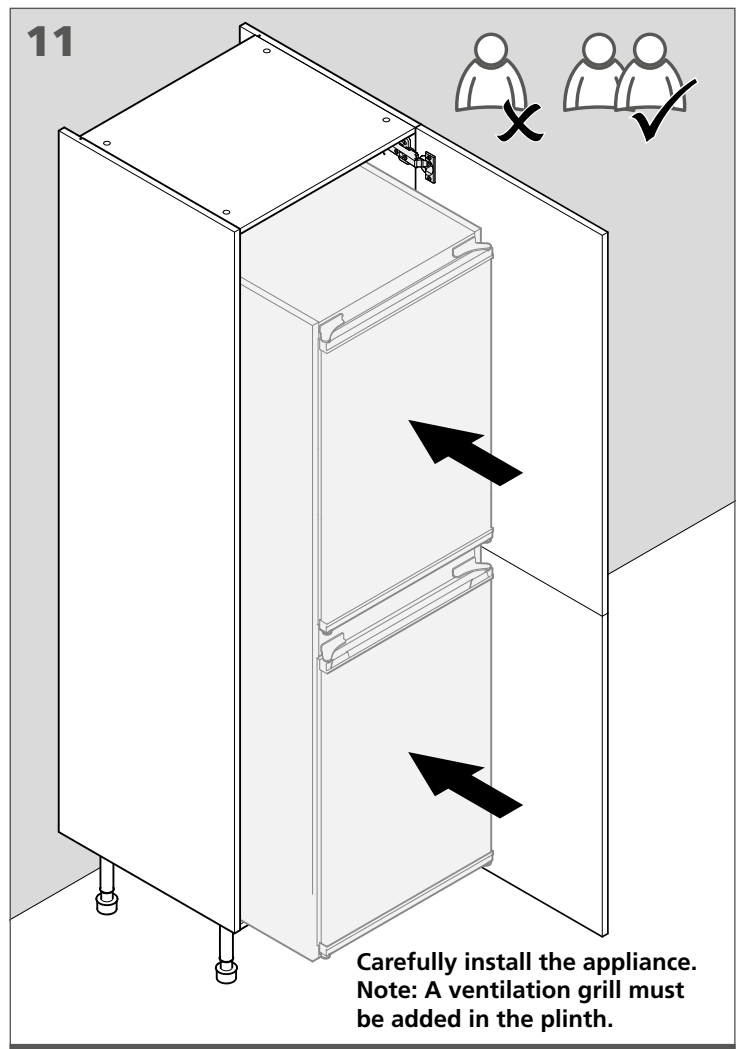
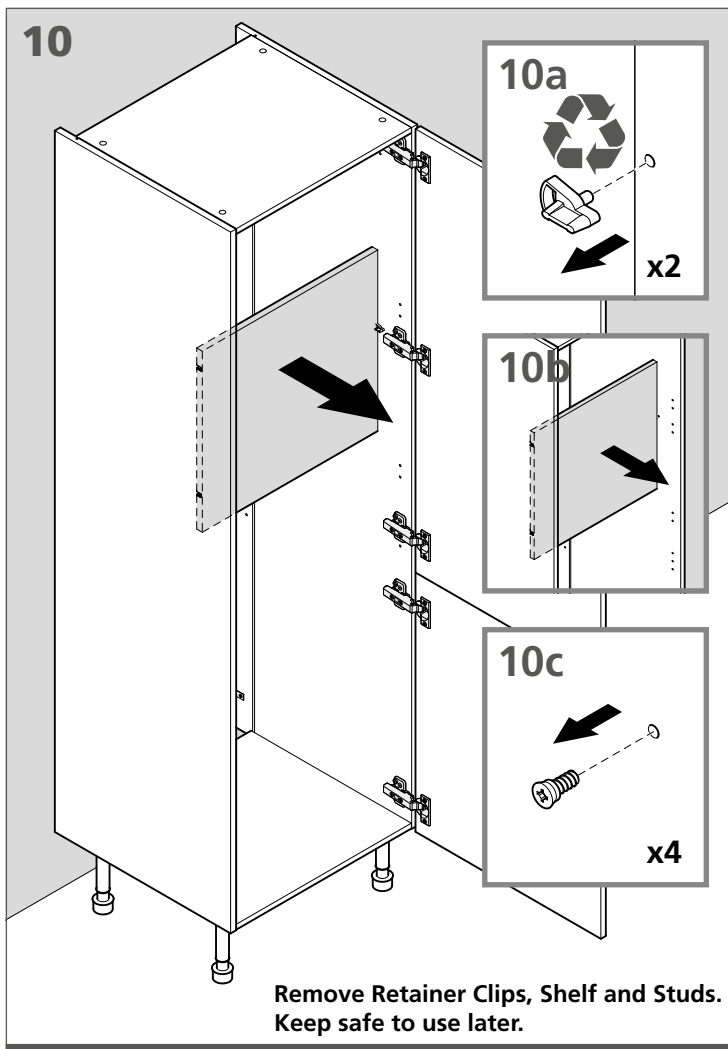


Measure the appliance and ensure that the cabinet doors and appliance doors are correctly aligned. Increase or decrease the sitting height of the appliance to suit. Place a panel underneath the appliance if extra height is required.

50/50 Doors

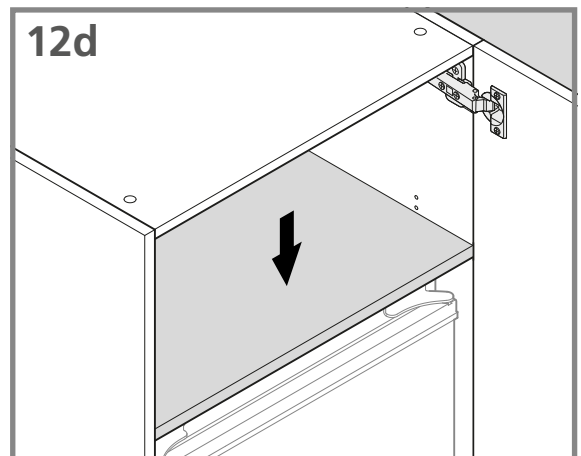
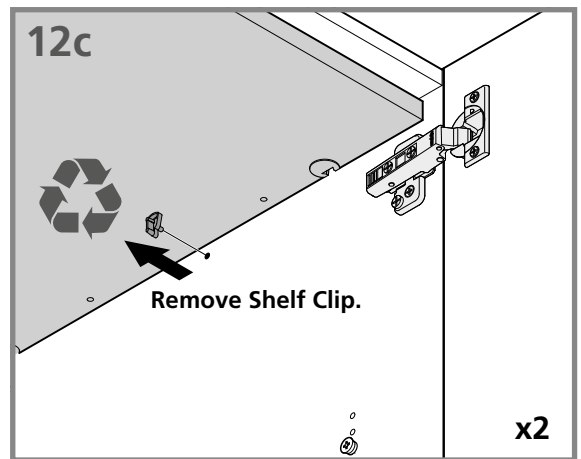
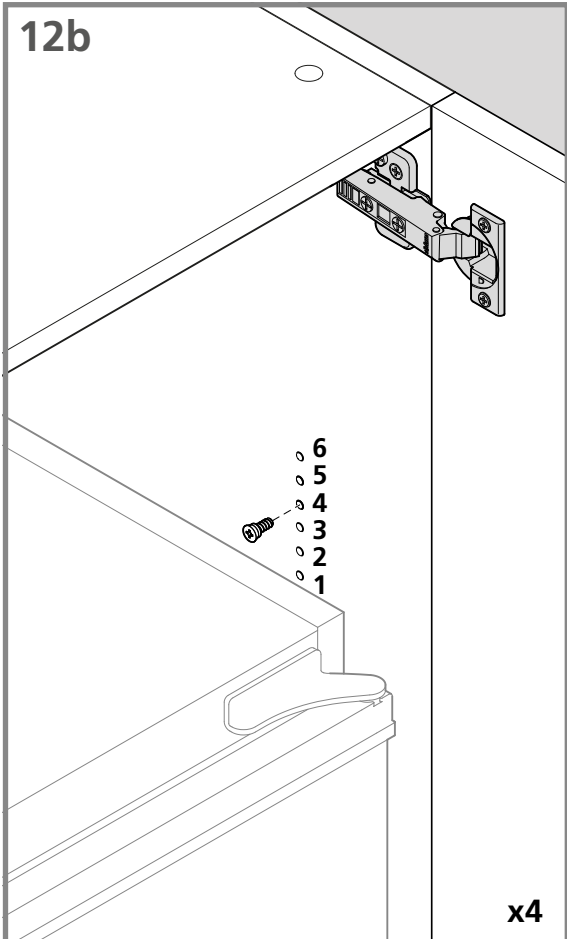
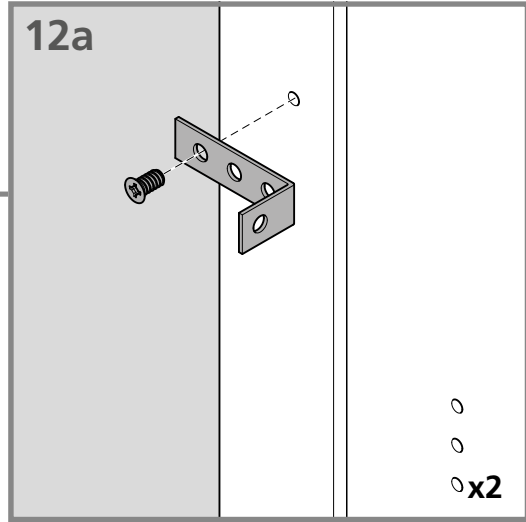
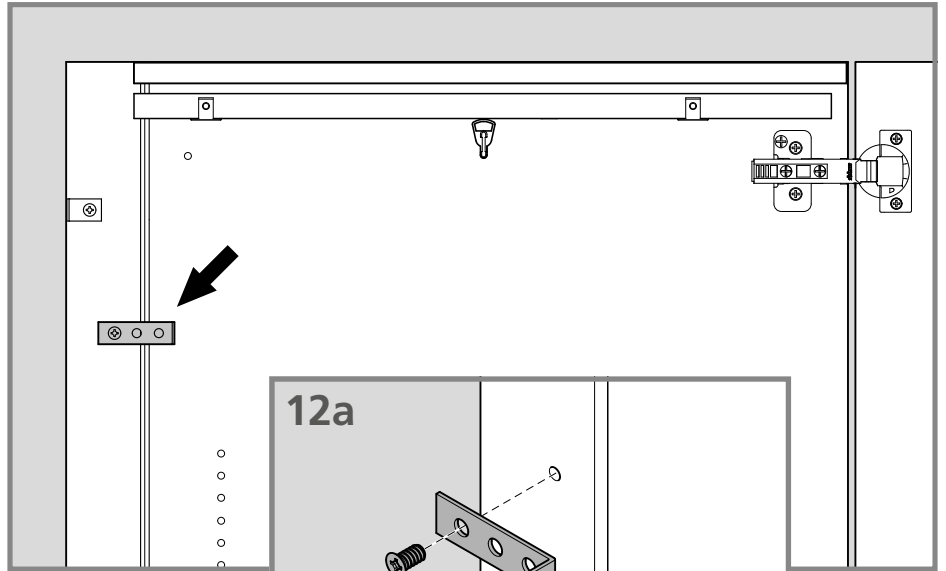
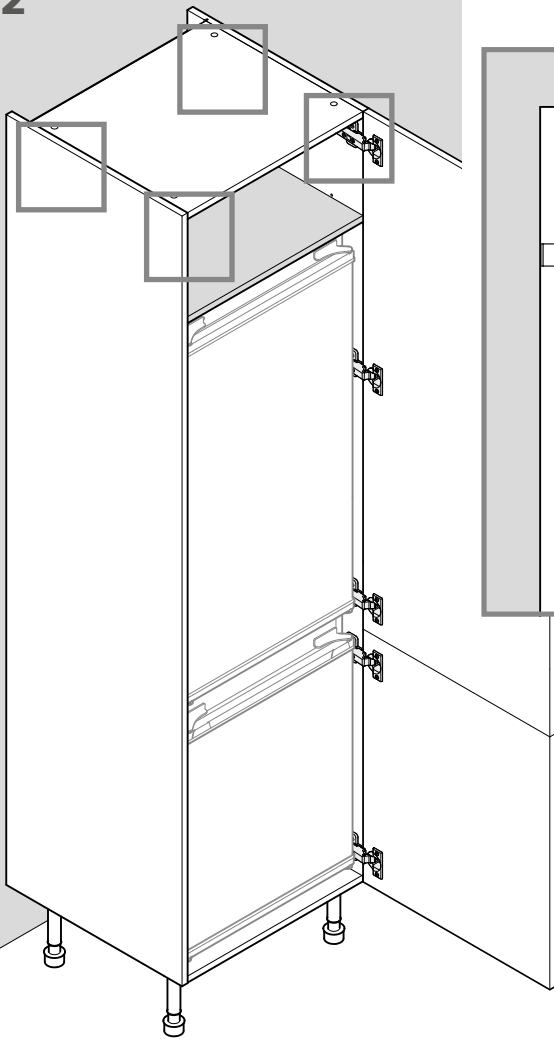
60/40 Doors





12

2310mm Tall Standard Housing ONLY



Using Studs from Step 3. Insert the Studs into one of the six holes to obtain desired Shelf height.

Lower Shelf and push fit onto Studs.

13 2118mm
Standard Housing

2310mm
Tall Standard Housing

13a

52mm !

X-1mm

100mm

Using the Shelf from Step 10.
Cut down to produce the
Back Panel.

14 2118mm
Standard Housing ONLY

14a

Using the Studs saved from Step 10. Insert into the holes shown near the back of the unit .

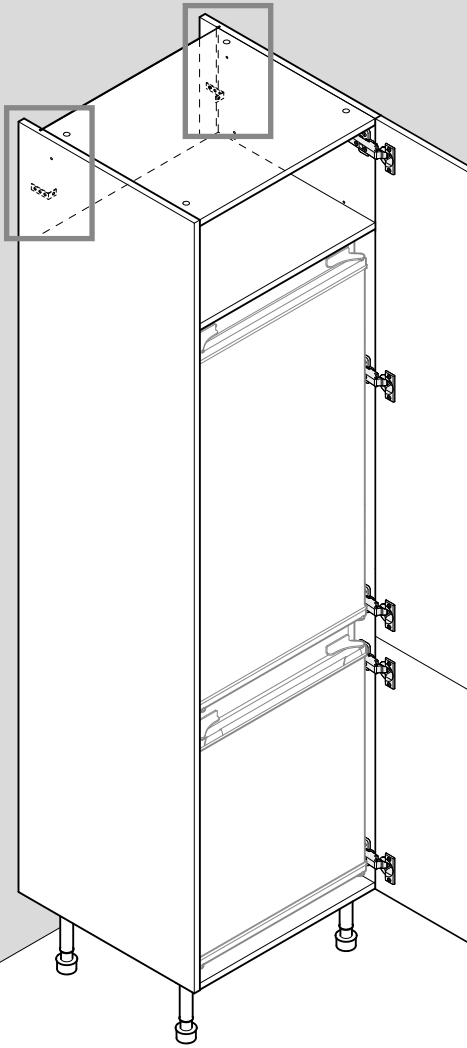
x2

14b

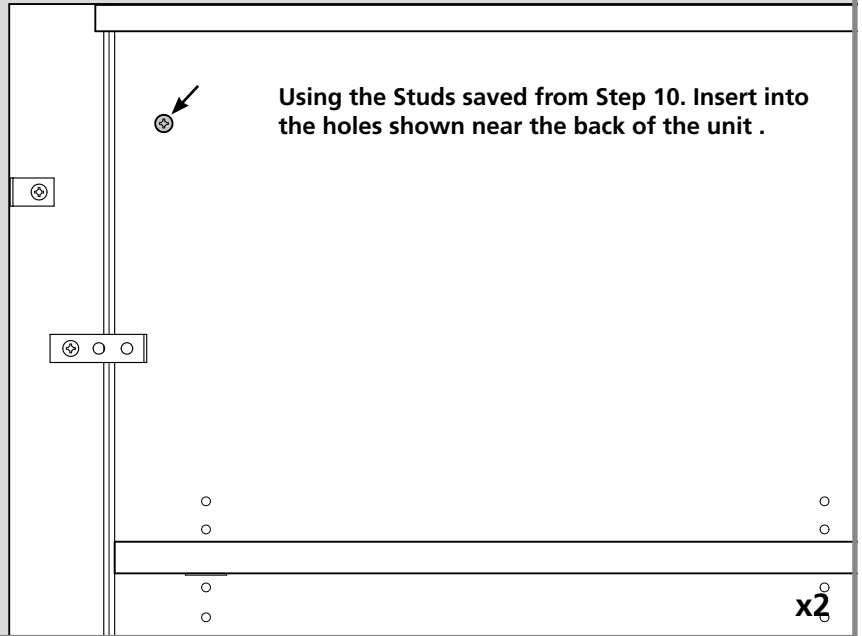
Using the Back Panel created in Step 13. Insert into void and locate the Push Fit onto Studs.

15

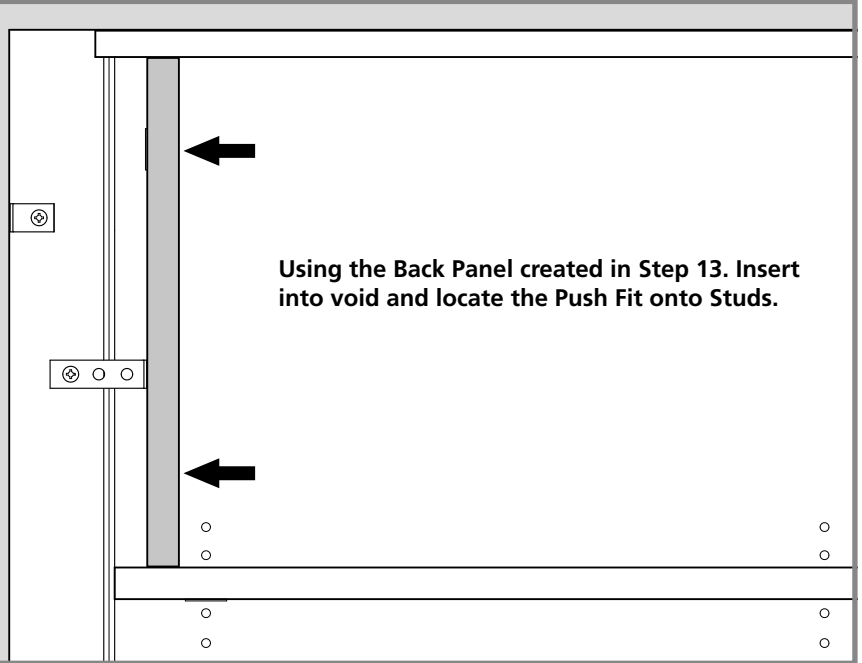
**2310mm Tall
Standard Housing ONLY**



15a



15b

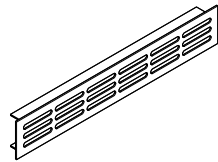
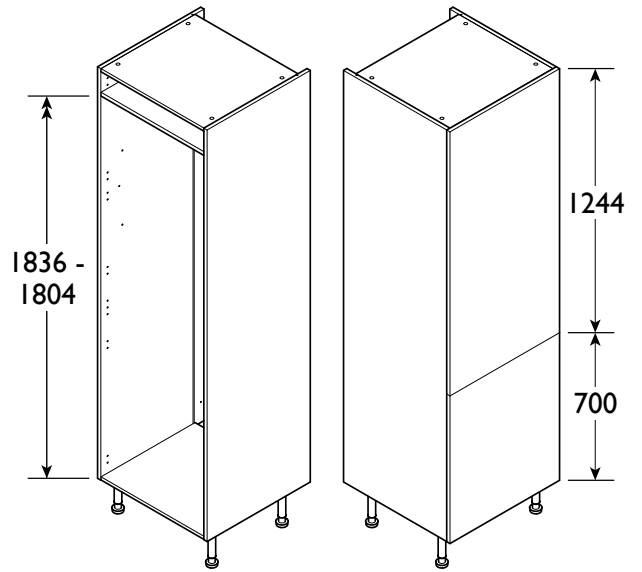
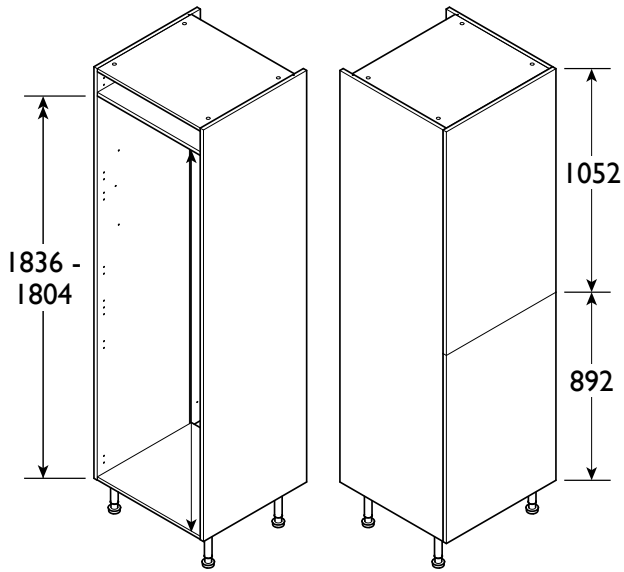


16

2118mm Standard Appliance Housings Aperture & Frontal Sizes

Type H355
50/50

Type H364
60/40



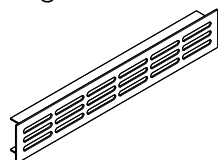
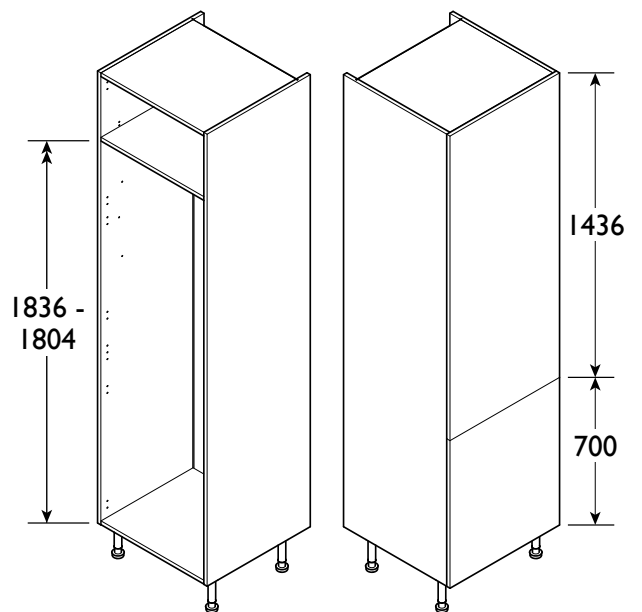
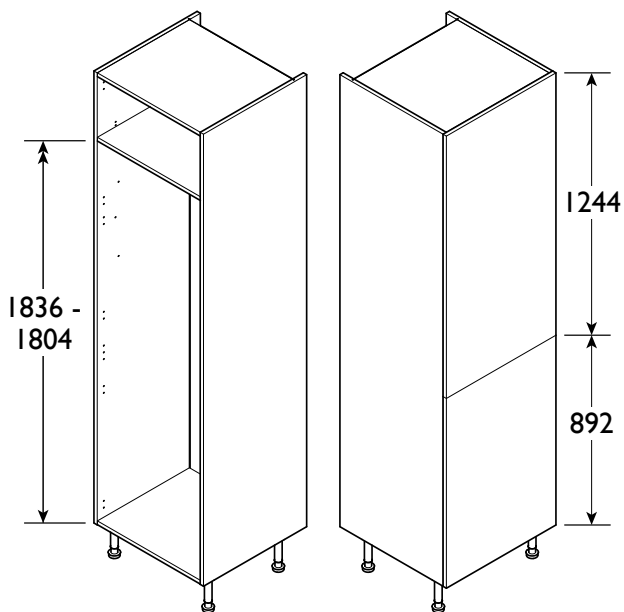
All fridge/freezer housings are supplied with a ventilation grill which is fitted into the plinth, directly below the appliance.

17

2310mm Tall Standard Appliance Housings Aperture & Frontal Sizes

Type HT355
50/50

Type HT364
60/40



All fridge/freezer housings are supplied with a ventilation grill which is fitted into the plinth, directly below the appliance.